

jardin. sculpture garden

Lauma Freimane

Emilija Bumbule

Ralfs Ašaks

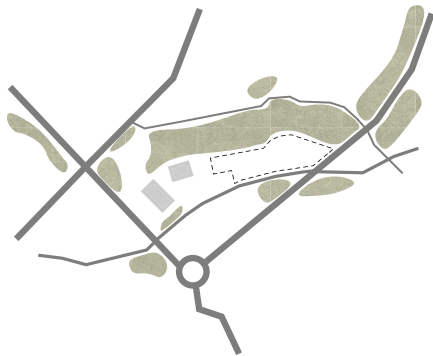
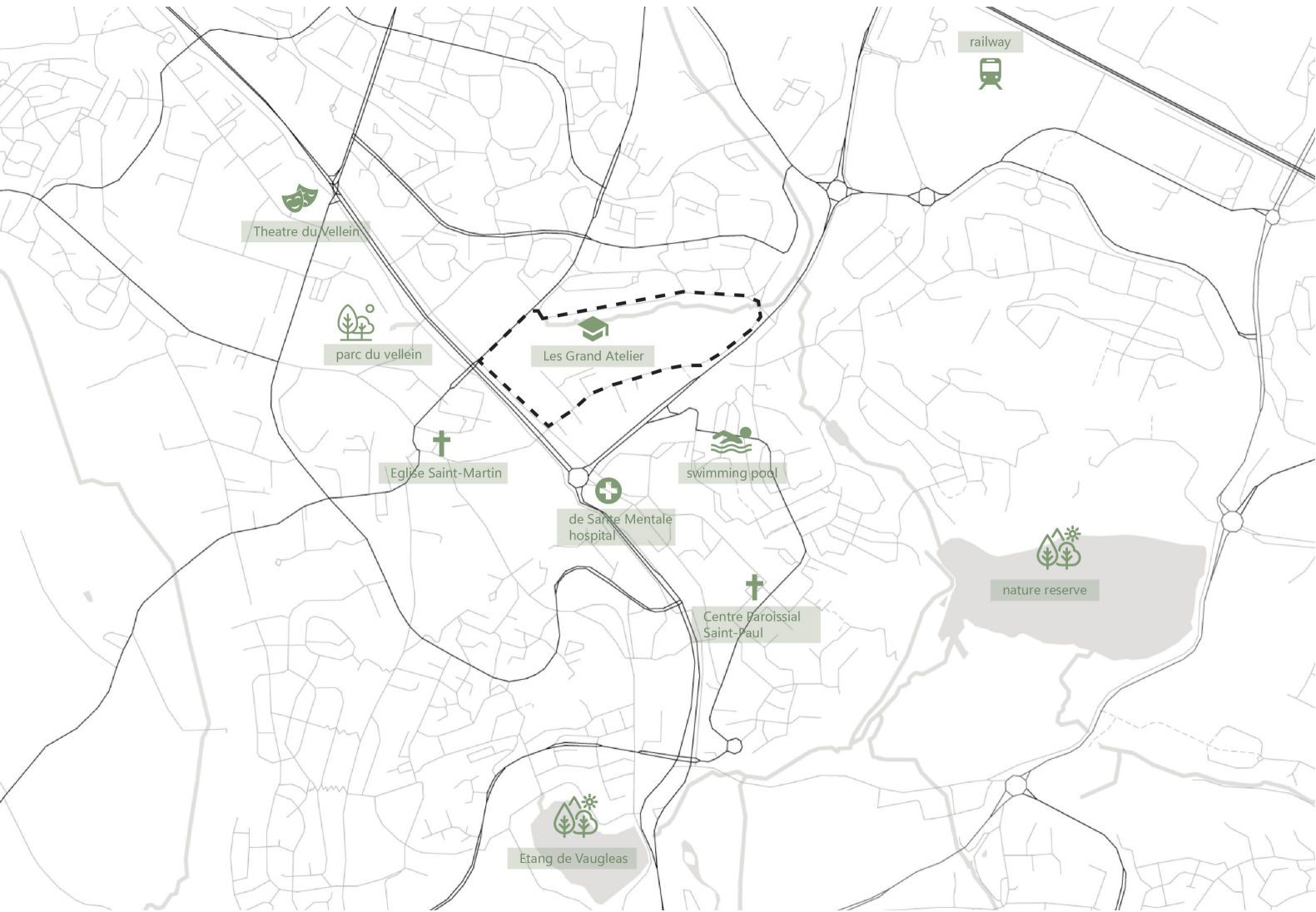




Saint Gobain International Architecture Student Contest



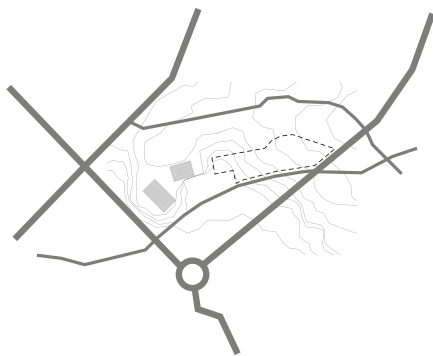




vegetation - existing greenery



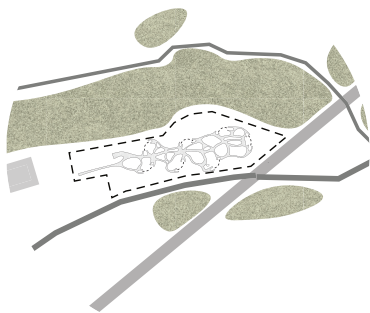
vegetation extension - planned
greenery development



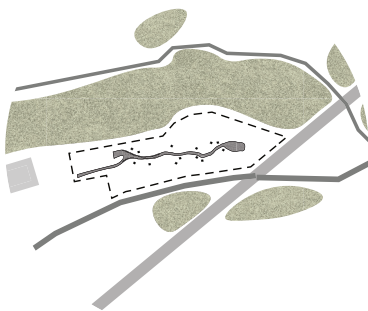
topography - site slightly slanted



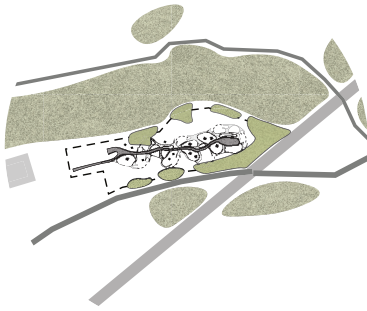
The project revolves around the development of a student accommodation complex on a vast terrain located in a meadow adjacent to a serene forest. The site currently includes two existing workshop buildings, which serve as anchors for this new architectural endeavor. The challenge is to incorporate modern, energy efficient design into functional campus. The site is a spacious meadow that provides space for creative architectural and landscaping solutions.



restoring connection path to nature



enhanced flow and joyful exploration



spreading greenery and activities

jardin. • sculpture garden

The Jardin. sculpture garden campus concept for the Saint-Gobain Architecture Competition 2025 envisions a dynamic, sustainable, and flexible living environment that integrates student accommodations with a prototype village amidst the meadow and forest of Les Grands Ateliers in Villefontaine. Featuring modular CLT cabins designed for quick construction, deconstruction, and relocation, the project allows for scalability and adaptability, accommodating 1-2 or 4-8 occupants in bunk bed configurations, along with shared utility cabins for kitchens and bathrooms.

The cabins and prototypes, designed as sculptural forms, create an ever-evolving “living sculpture garden,” blending functionality with artistic expression. This adaptability enables the campus to grow in response to future needs while preserving environmental harmony. By fostering interaction between students and the architectural prototypes, the campus becomes a living laboratory for sustainable design, promoting creativity, innovation, and environmental stewardship.



material logistics



human scale
construction



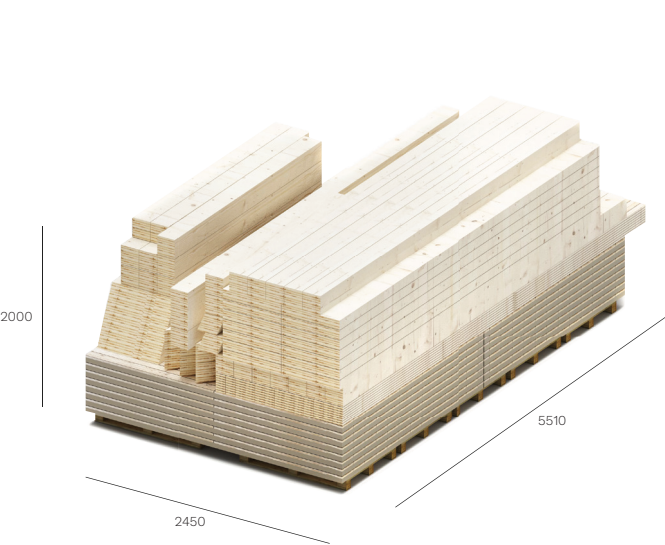
easy assembly
-disassembly



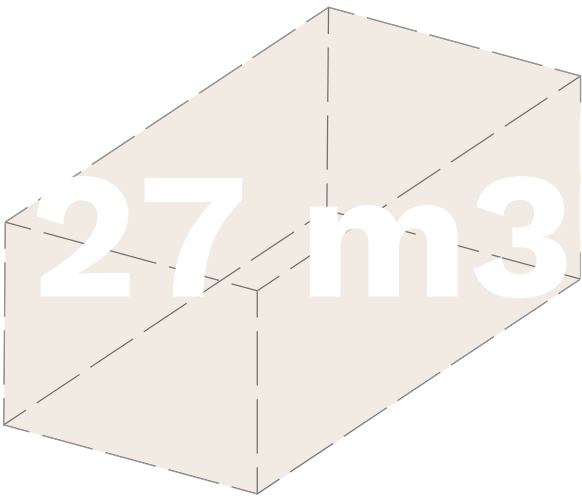
adaptability



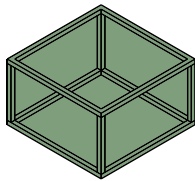
efficiency on site



closed envelope cabin structure
on 8 EUR-PALLETS



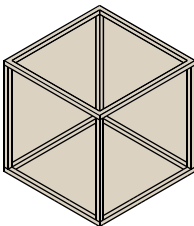
3 complete sets are compatible with standart
semi - truck Eurotrucks 82 (EURO)



5x5x3

Lounge are
Flexible space
Utility rooms

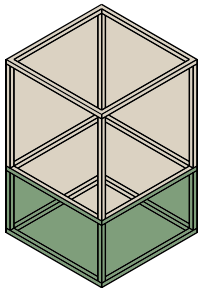
+



5x5x5

Sleeping area
Lounge area
Storage

=

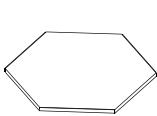


5x5x8

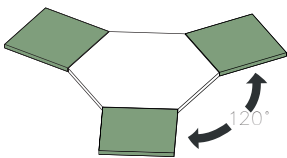
Up to

9

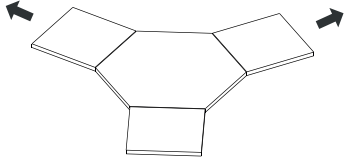
configurations



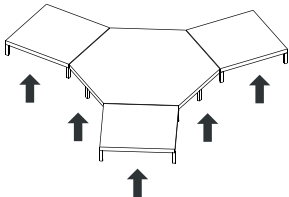
base



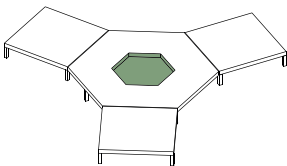
distributionp



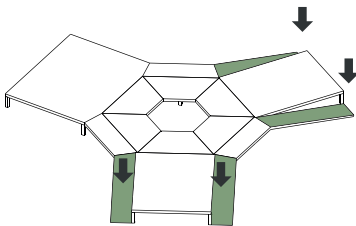
rivacy - function



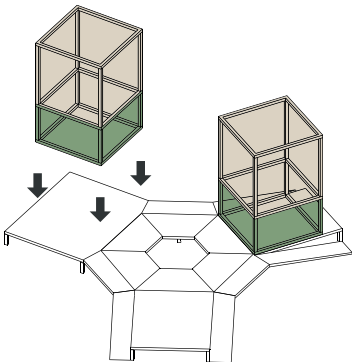
elevated - terrain



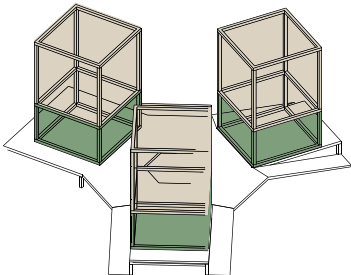
community focal point



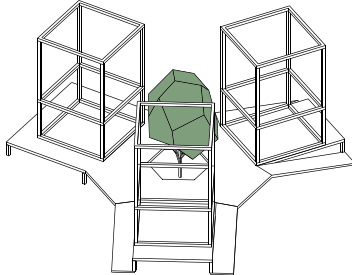
connection with terrain



assembly



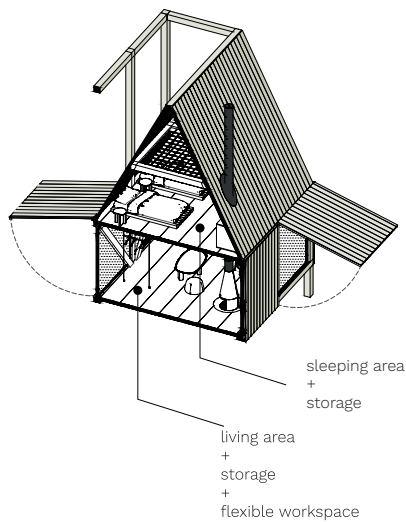
rogram



nature

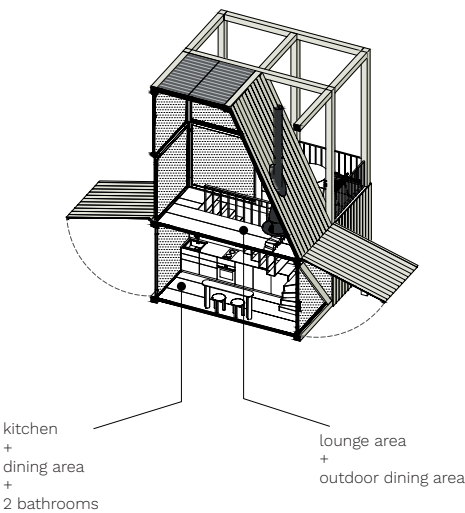
Comfort

capacity for 1-2 inhabitants



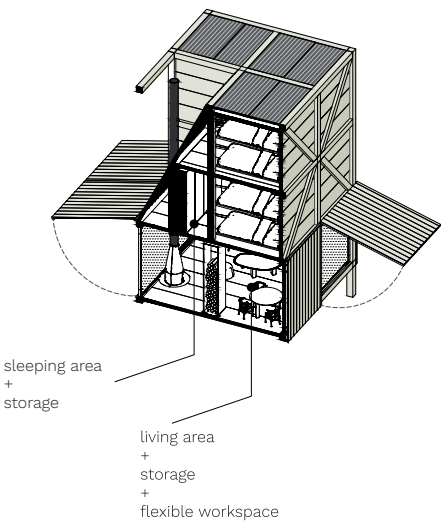
Utility

utility cabin provided for each platform

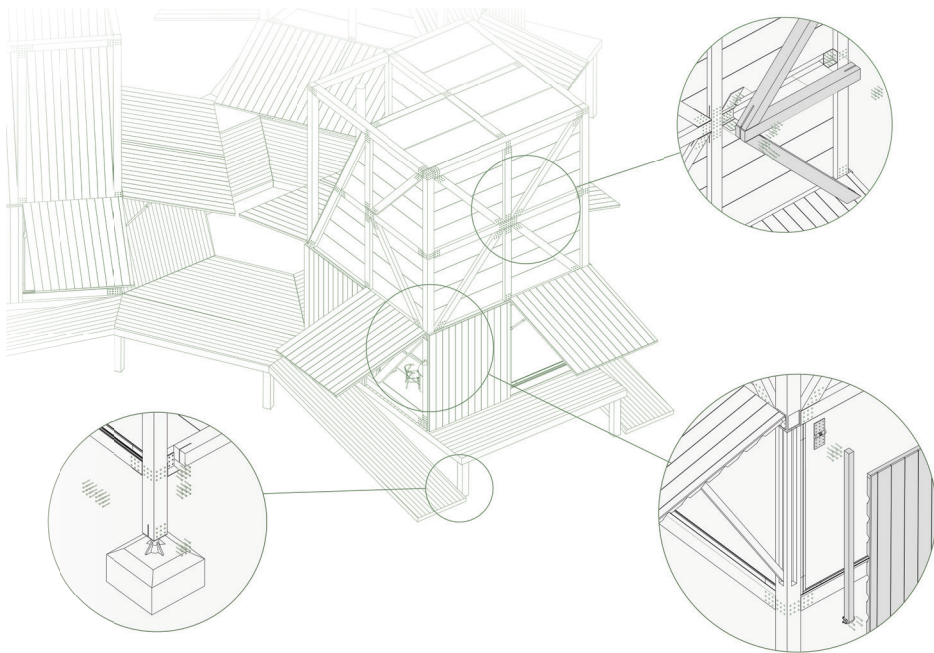


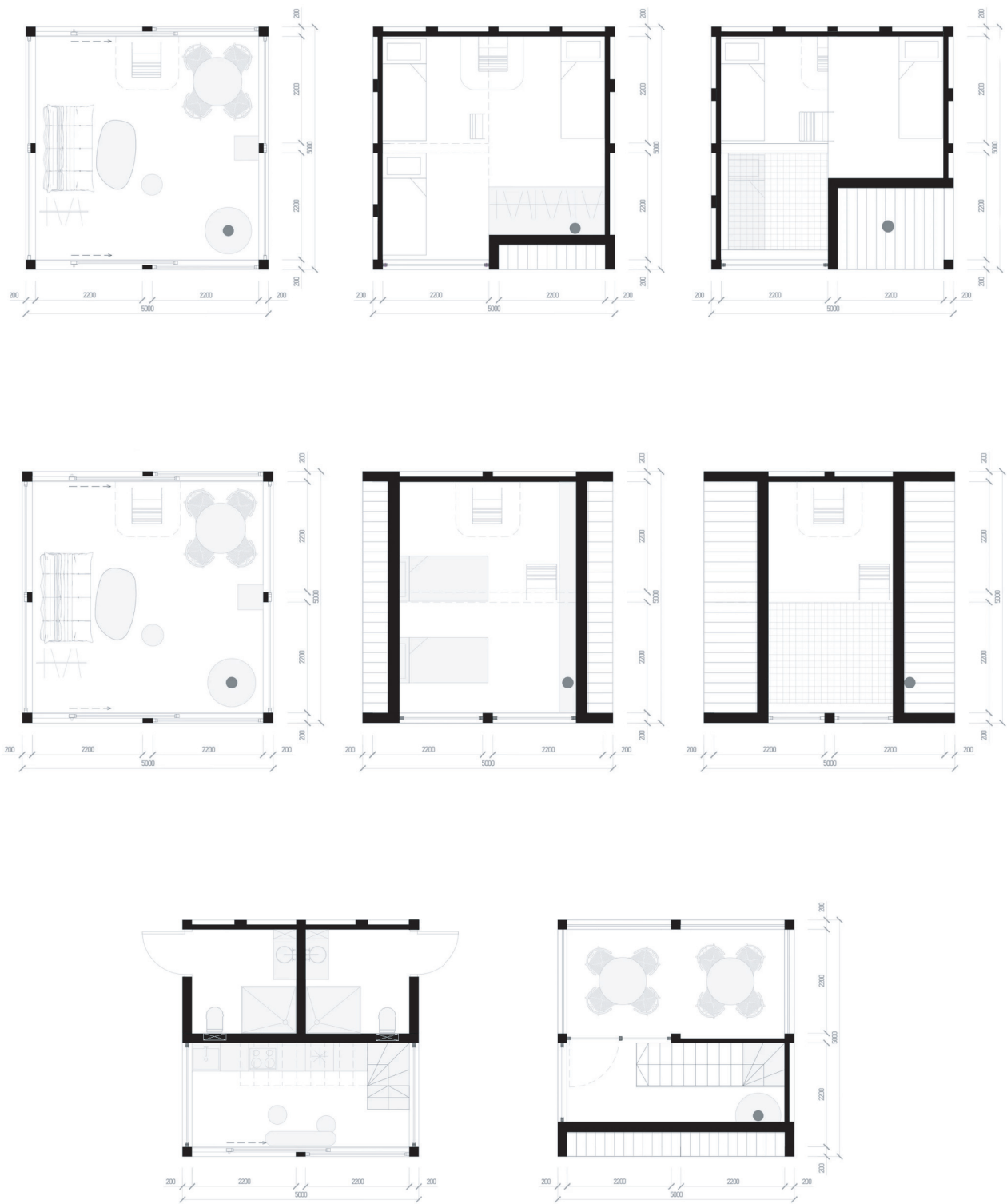
Practical

capacity for 4-8 inhabitants



The cabins emphasize sustainable design through modular CLT constructions that are lightweight, compact. The cabins are designed to take up minimal space during transportation, reducing fuel consumption and carbon emissions. This portability ensures the cabins can be easily relocated and repurposed, adapting to evolving needs. Beyond serving as student accommodations, these cabins are versatile and can function as workspaces, study pods, or creative hubs during off-peak periods. If no students are residing on-site, they could be rented out as backyard offices, Airbnb units, or small business spaces.





Nº1 practical

Practical cabin hosts 4-8 persons by providing folding bunk beds in a two and a half level cabin. Lounge area and multifunctional space is located on the first level, it is a space for students to connect and be together. The cabins are equipped with furnace that provides cozy environment

Nº2 comfort

Comfort cabin shares the same first level functions as practical cabin, but only has 2 beds on the second level, which provides more freedom and privacy. These cabins are best for visiting tutors.

Nº3 utility

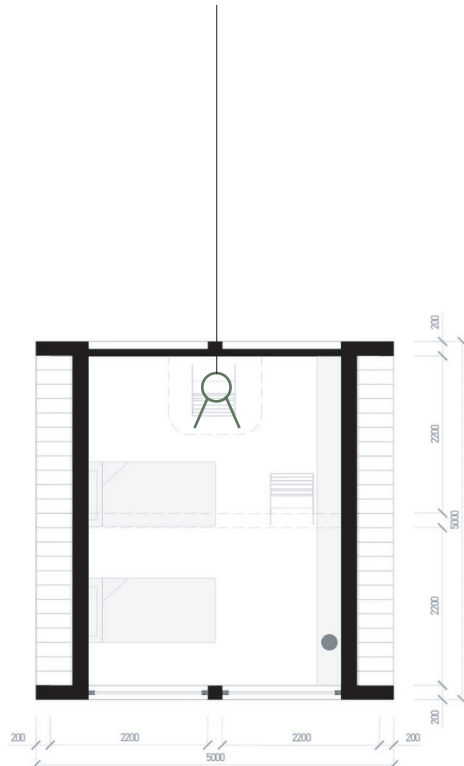
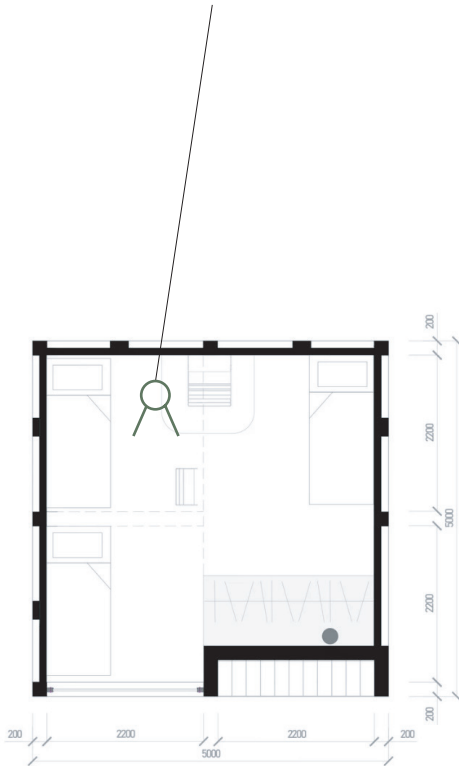
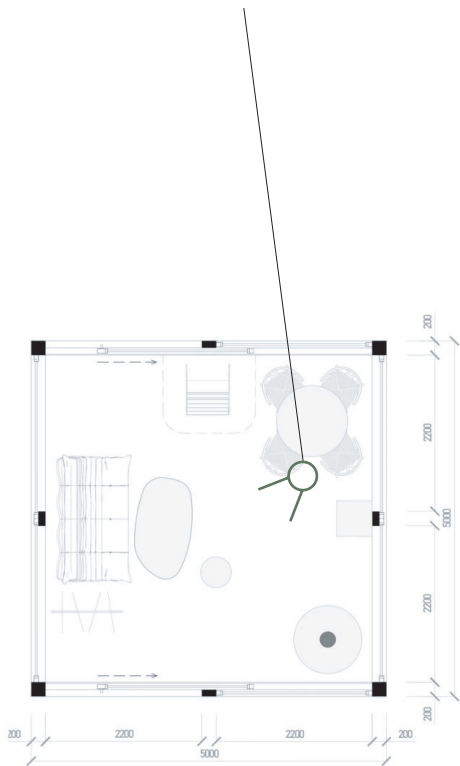
Utility cabin is equipped with communal kitchen, indoor dining area, balcony on the second level and outdoor dining area. Additionally it also has bathrooms with separate entrances.

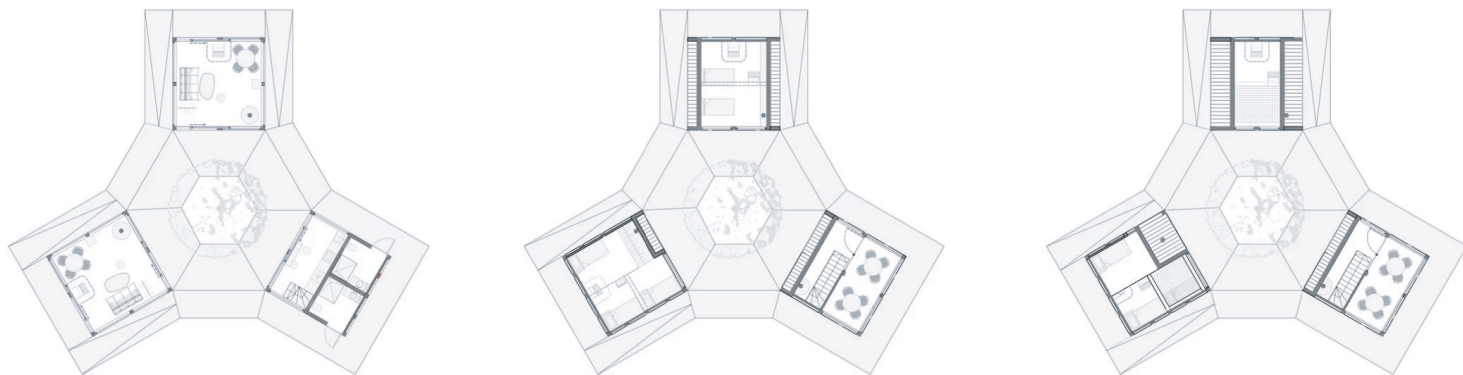
Their modular nature also allows for seamless expansion; additional cabins can be installed quickly and integrated into the existing layout as student populations grow. Designed for rapid assembly and disassembly, the cabins can be relocated and reused in entirely new contexts, reinforcing their value as sustainable, multifunctional architectural solutions.





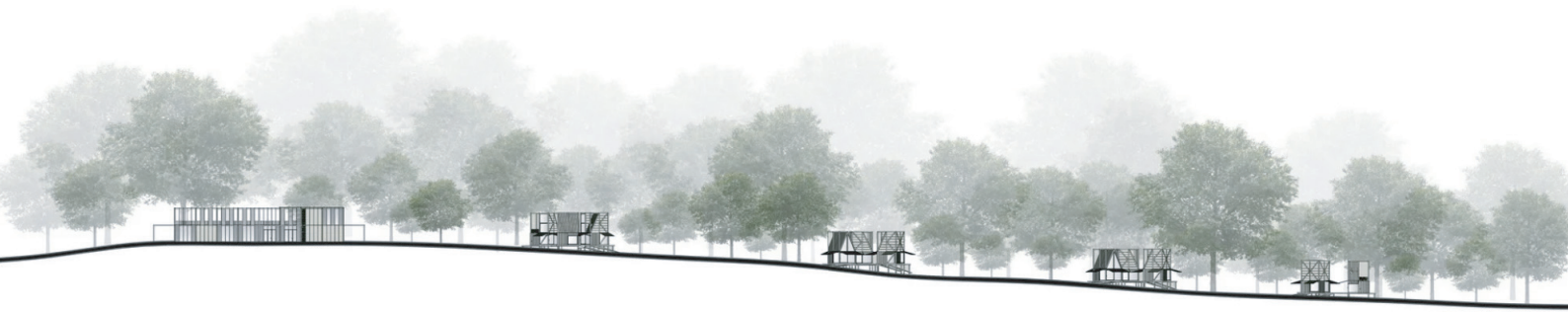






Platform upon which cabins are installed, provide sense of community and encourages communication and togetherness. Students will have a chance to have a shared outdoor space that connects them to nature for rewinding and lounging





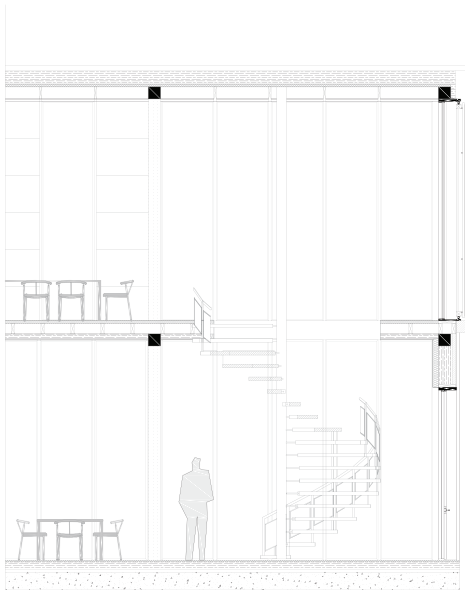
Raised platforms provide chance for construction without interfering with terrain which is quite prominent in this site. The platforms support the idea of easy construction and deconstruction.





Masterplan consists of two already existing Les Grand Atelier workshop buildings and newly constructed Laboratory of co-creation, boiler room and seven clusters of cabins that can host 70 people at once. Prototype village is located along the main path providing a nice walk surrounded by "sculptures"

masterplan of Les Grand Atelier - Density proposal 04/20

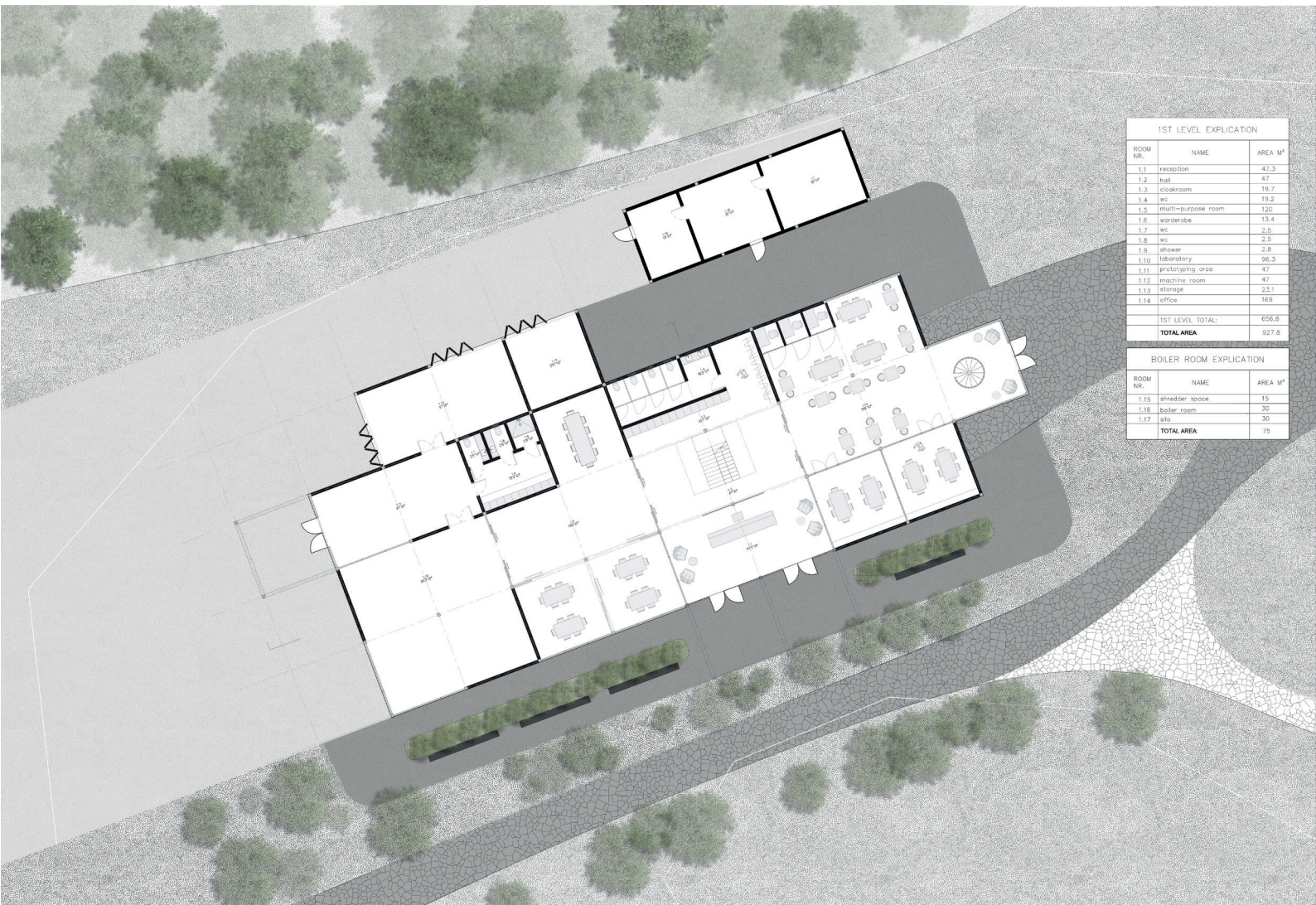


Laboratory of Co-Creation's facade is made out of CLT panels with glazing and wooden lamell shutters to control the natural heating and light.

jardin. • co - creation



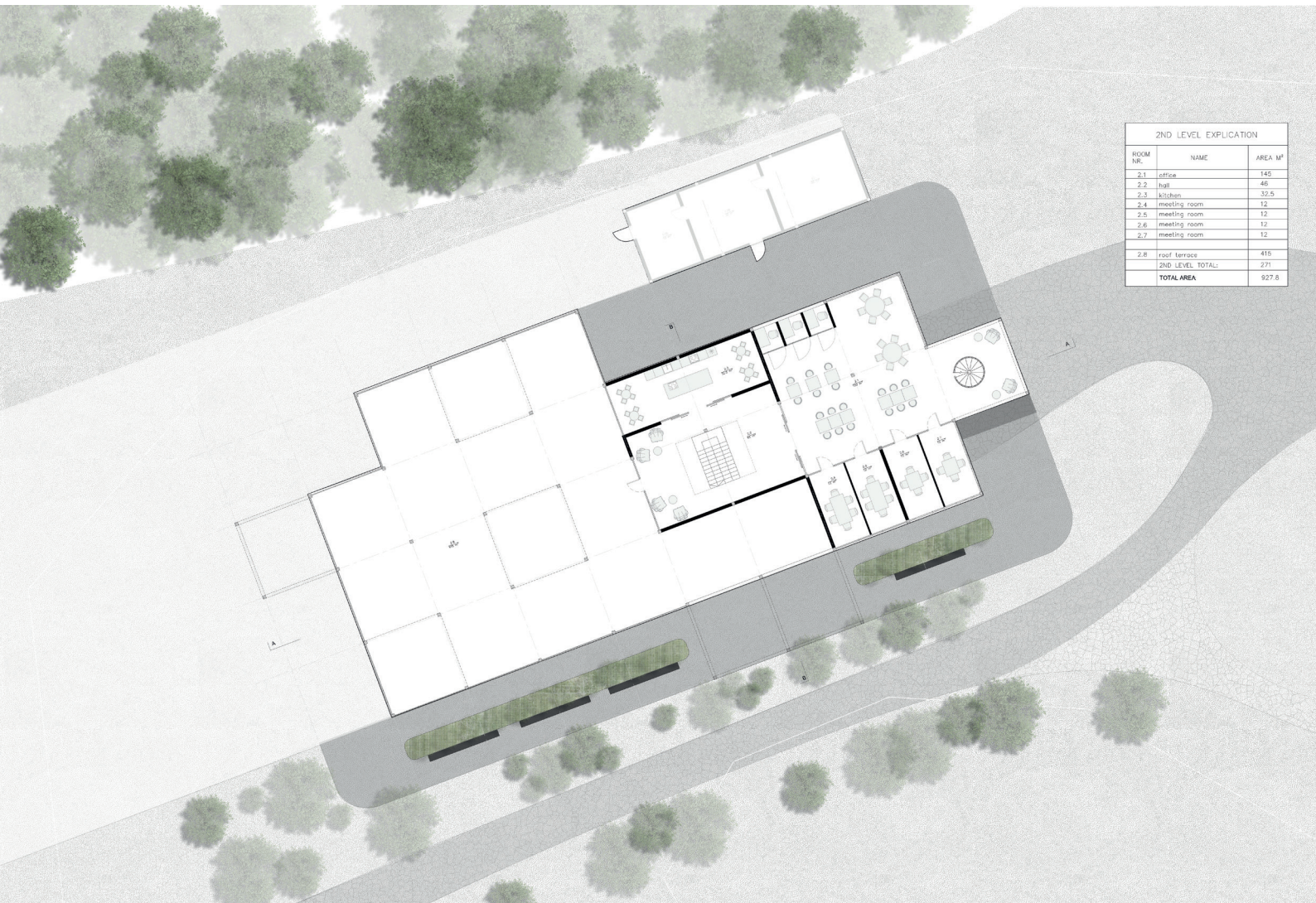
Laboratory of co-creation is a separate building that hosts functions like machine rooms, prototyping areas, offices, meeting rooms etc. Building is constructed in similar principles as the cabins, it consists of 5x5m CLT beam structure. Laboratory of co-creation introduces the cabins to the site by gradually lowering down the scale from already existing Atelier buildings to campus cabins.



section cut A-A



section cut B-B



south-west elevation

north-west elevation

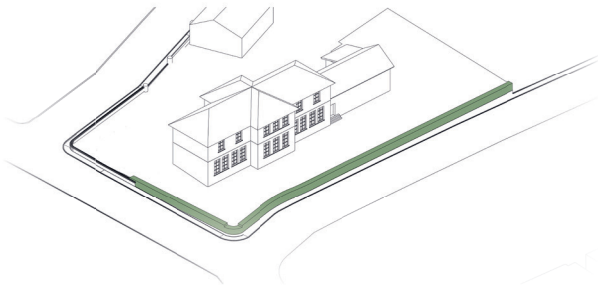




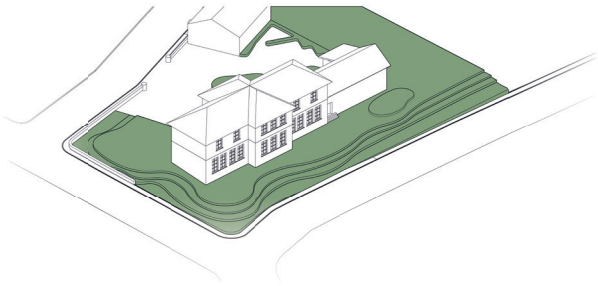
jardin. chimilin



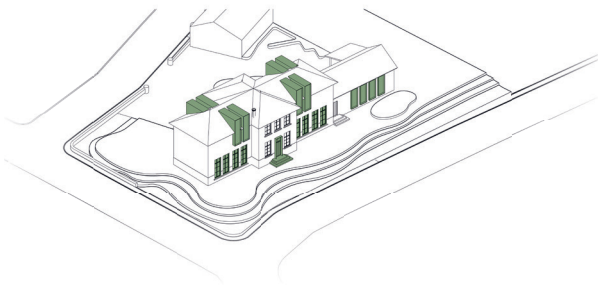
Restauration project is located in Chimilin, it has 1500 inhabitants and the city is proposing to create a cultural house that will host different activities for the city. Our aim was to create the landscaping more inviting, by relocating the main entrance and creating a park like space in the front of the building. The second strategy was to let more light in the space by constructing new vertical glazing and utilize the attic level. As a connecting element to Ville Fontaine, we used the 5x5 modular system as an extension to the building that will function as a small cafe



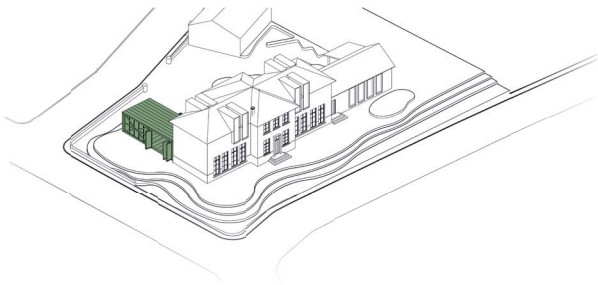
existing situation - wall i



improved landscape



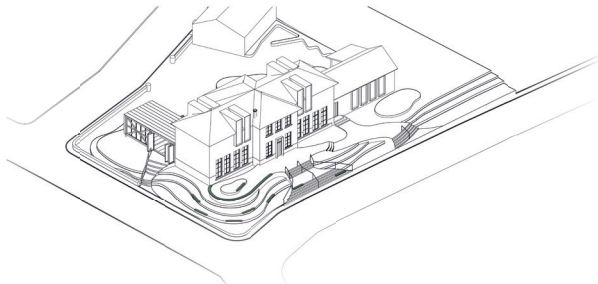
renovation



added structure - outdoor cafe

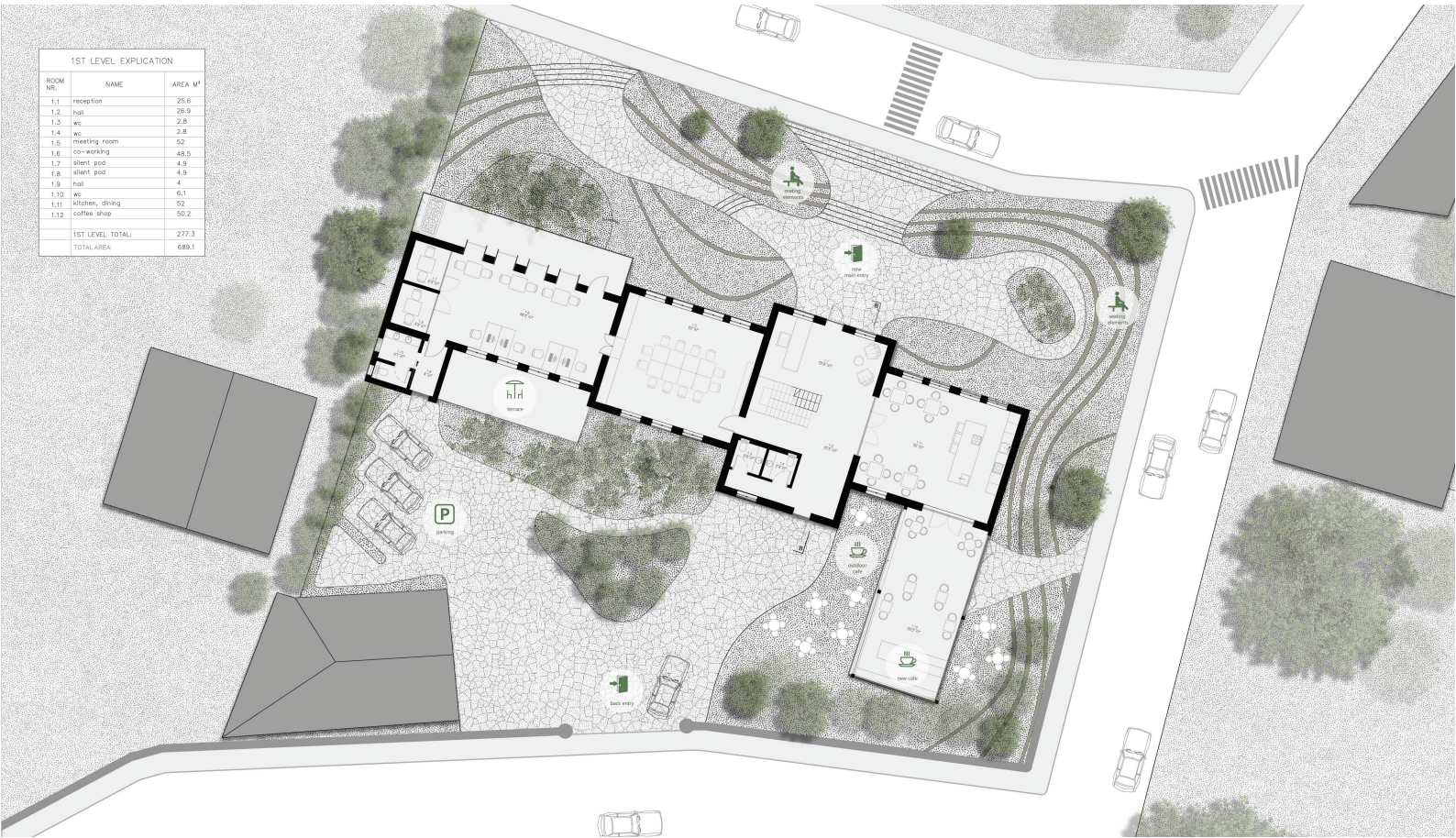


elevated paths for access



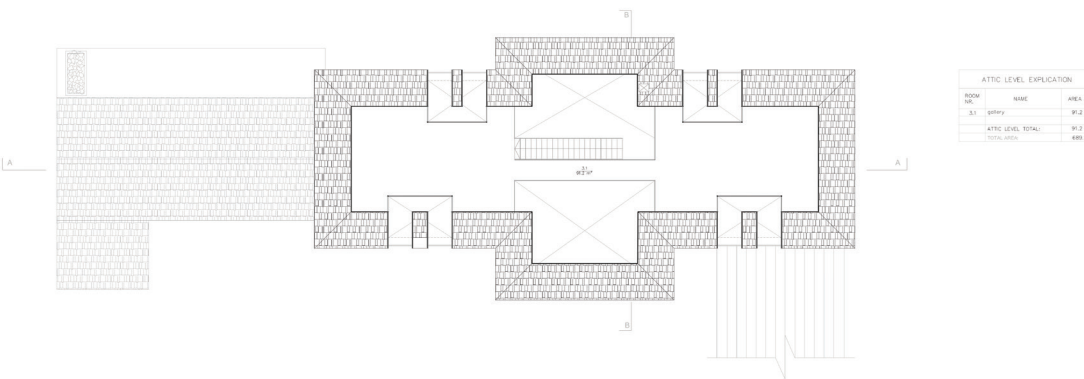
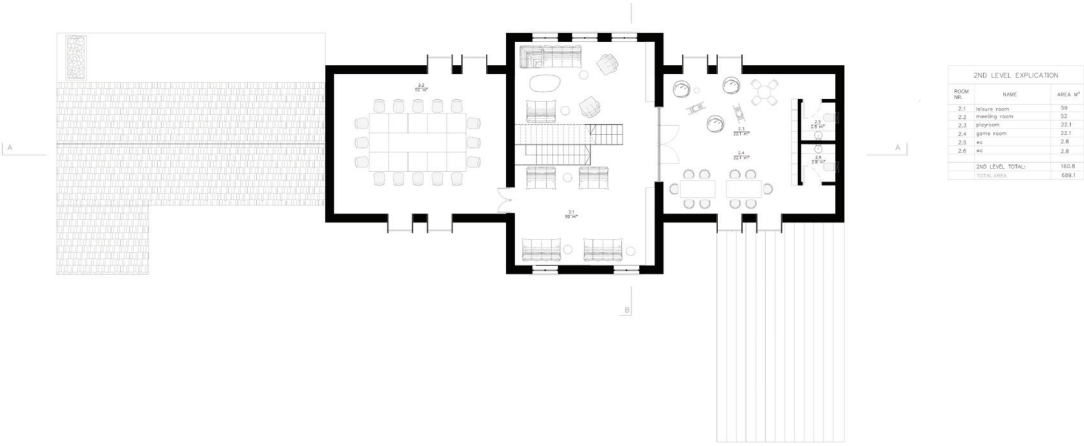
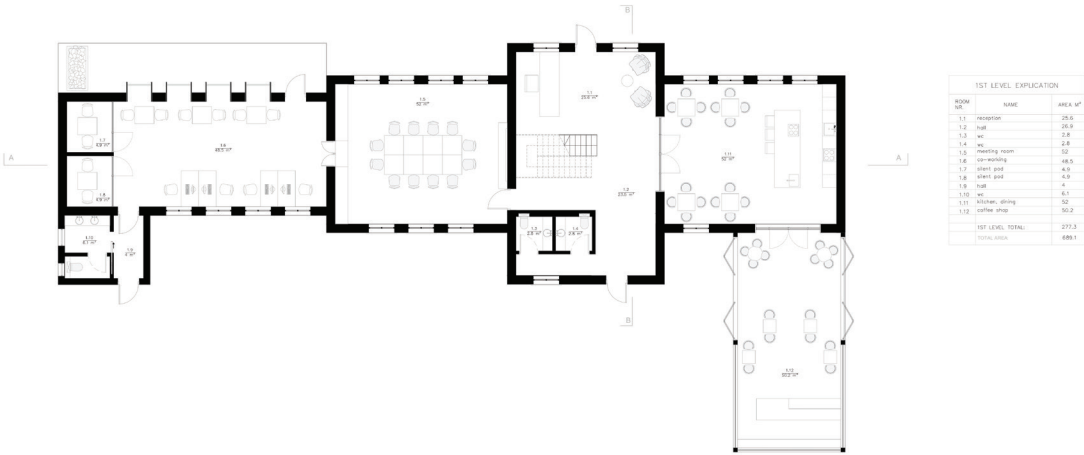
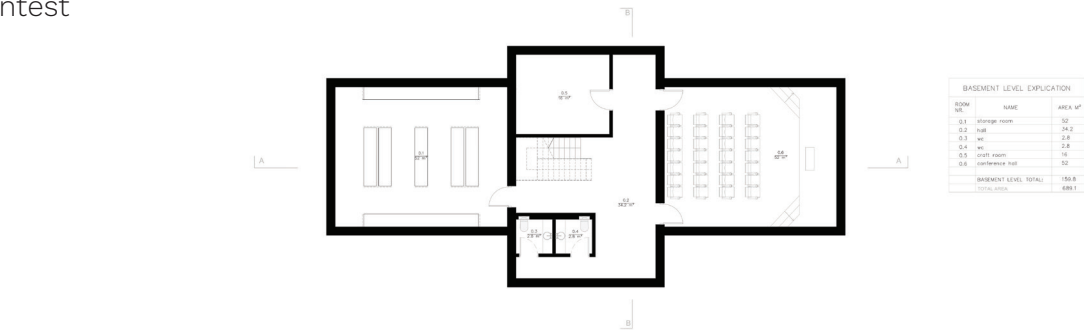
seating area

1ST LEVEL EXPLICATION		
ROOM NR.	NAME	AREA M²
1.1	reception	25.6
1.2	hall	26.9
1.3	ec.	2.5
1.4	ec.	2.8
1.5	meeting room	52
1.6	co-working	48.5
1.7	silent pod	4.9
1.8	silent pod	4.9
1.9	hall	4
1.10	ec.	6.1
1.11	kitchen, dining	52
1.12	coffee shop	50.2
1ST LEVEL TOTAL:		277.3
TOTAL AREA:		689.1



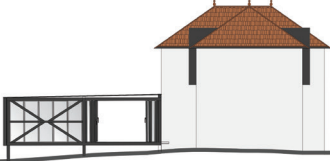
section cut A-A

section cut B-B





south - east elevation



north - west elevation



south - west elevation



north - east elevation

jardin. sculpture garden

