

**END OF YEAR**

**24/25**

**EXHIBITION**

**MA  
ARCHITECTURE  
AND URBANISM**

**MANCHESTER SCHOOL  
OF ARCHITECTURE**

**MANCHESTER**  
1824  
The University of Manchester



**Manchester  
Metropolitan  
University**







# Exploring New Utopias

The MA in Architecture and Urbanism at Manchester School of Architecture offers a platform for rethinking the role of architecture within the wider processes of urban transformation. It fosters a collaborative, interdisciplinary environment where students engage with global cultural, economic, and environmental forces that shape our cities today. Rather than treating architecture as an isolated discipline, the programme positions it as a critical practice intrinsically tied to questions of urban change.

At the heart of the course are the Urban Labs — site-specific investigations that confront contemporary crises through design, research, and speculation. This year, the guiding theme was New Utopias: Envisioning [Im]possible Futures. Utopian thinking has long inspired radical urban visions, as material expressions of collective hopes for a better world. While many experiments have failed or fallen short, the act of imagining alternatives remains a vital tool for critique and innovation. Our studios reclaimed the utopian impulse as a catalyst for debate, experimentation, and new forms of urban imagination.

Across the year, an international cohort of students collaborated with architects, urbanists, landscape designers, environmental consultants, and historians to develop projects within four Urban Labs: Contextual Urbanism, Prototype Urbanism, Dwelling & Urbanism, and Landscape & Urbanism. Sites in Barcelona, Sabadell, Riga, Manchester, and Karystos provided diverse grounds for inquiry, testing the relationship between context, culture, and speculative design.

The projects on display emerge from this rich collective process. They combine rigorous research with imaginative projection, offering visions that are at once critical and hopeful. Together, they demonstrate the power of design to question the present and suggest more inclusive, resilient, and future-oriented ways of inhabiting the urban world.

- Dr Loris Rossi  
(MA A+U program lead)



# MA A+U Teaching Team



**Dr Loris Rossi**  
MA A+U Program Lead



**Dr Dhruv Sookhoo**  
MA A+U Deputy Program Lead  
Dissertation and RME Lead



**Dr Demetra Kourri**  
Cities and Urbanism Lead



**Dr Glen Wash Ivanovic**  
Design Studio Lead



**Eamonn Canniffe**  
Contextual Lab Lead



**Dr Marianna Cavada**  
Prototype Lab Lead



**Eddy Fox**  
Landscape Lab Lead



**Dr Mazin Al-Saffar**  
Lecturer in Architecture  
and Urbanism



**Dr Catalina Ionita**  
Studio Tutor



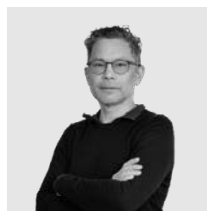
**Matt Quayle**  
Studio Tutor



**Joren Heise**  
Studio Tutor



**Dr Joanne Hudson**  
Studio Tutor



**David Johnson**  
Studio Tutor





**Dr Azreen Azlan**  
Lecturer in Architecture  
and Urbanism



**Chris Wong**  
Studio Tutor



**Curtis Martyn**  
Studio Tutor



**Dr Kaija-Luisa Kurik**  
Theory Tutor



**Dr Matthew Steele**  
Theory Tutor



**Eddy Taylor**  
Theory Tutor



**John Copestake**  
Theory Tutor



**Gonzalo Sanchez  
Garcia** Theory Tutor



**George Jepson**  
Theory Tutor



**Dr Junyan Ye**  
Theory Tutor



**Dr Lindsay Bush**  
Skills Tutor



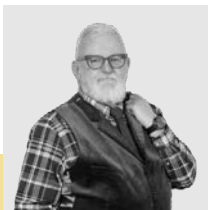
# Contextual Lab.

Contextual Urbanism laboratory searches for the ideal city in the fractures of the existing city. We study city forms and spaces in Riga, the UK and elsewhere to develop urban strategies which are universal and local, are utopian and pragmatic and which grow from studying the historic development of urban patterns in the specific condition of harbour cities. Design tools such as townscape, figure ground plans, urban transects and sections, physical and digital modelling are used to develop smart and resilient proposals for future urban situations which enhance the environments in which they are situated and map out improved modes of city life and culture. The Contextual Urbanism Urban Lab continues its international collaboration with the Faculty of Architecture and Design at RISEBA in Riga (Latvia).

Project site: Riga, Latvia



## Teaching Team



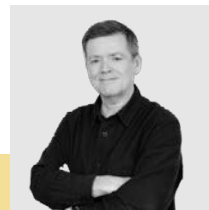
**Eamonn Canniffe**  
Lab Lead



**Dr Mazin Al-Saffar**



**Dr Catalina Ionita**



**Matt Quayle**

## Contributors

**Jonathan Kendall**

Partner/Director of Urban Design at Fletcher Priest Architects, London

**Rudolfs Dainis Smits**

Dean of the Faculty of Architecture, Riseba University, Riga (LV)

**Dr Efe Duyan**

Lecturer, Faculty of Architecture, Riseba University, Riga (LV)

**Jonas Buechel**

Lecturer in Sociology, Faculty of Architecture, Riseba University, Riga (LV)

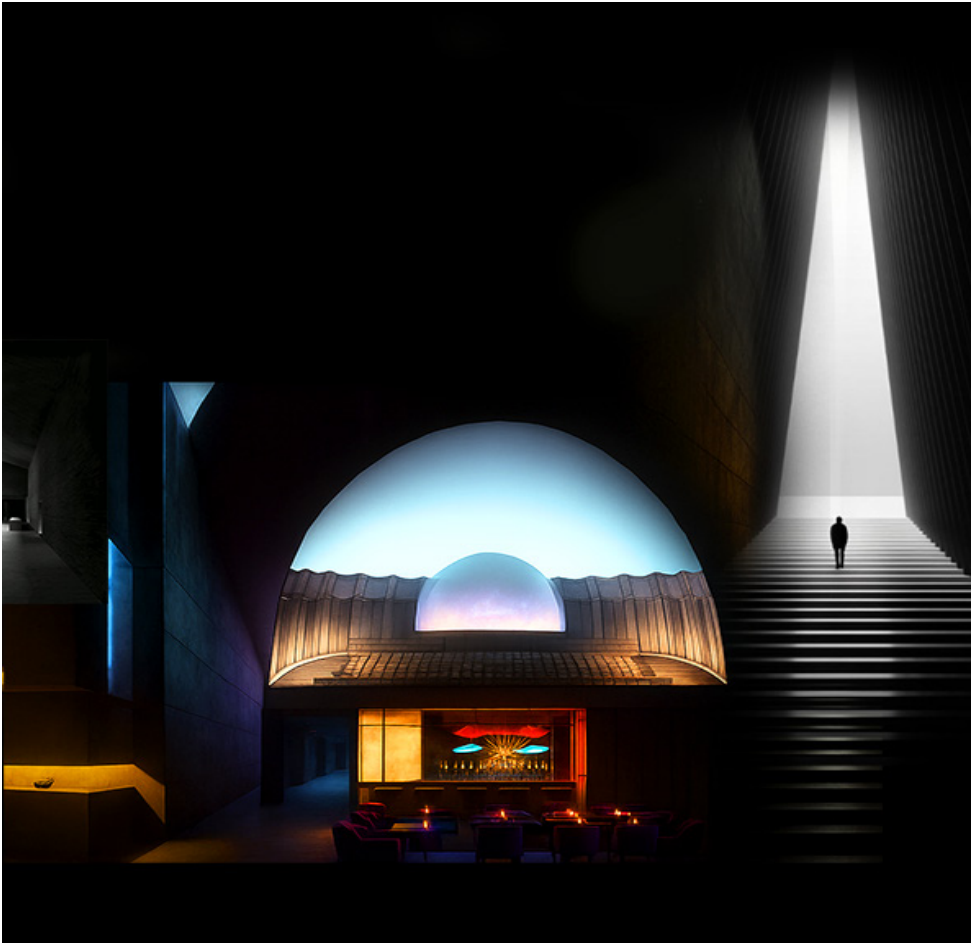
**Helena Gūtmane**

Landscape Architect, Faculty of Architecture, Riseba University, Riga (LV)

**Marc Geldof**

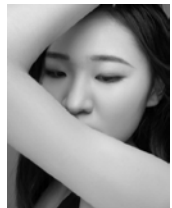
Urban Planner, Faculty of Architecture, Riseba University, Riga (LV)





# Timeless Frameless Frontiers: Bridging Riga's Beyond Reality Past

Design is to use architecture as a medium for film narrative. Through the arrangement of spatial sequence, form and light control, it organizes something like "shot progression" and "emotional rhythm" in a film-like manner. Space is no longer just a static container, but a narrative device that guides the experience.



Shuna Yang





# Layers of Riga

## Where every step echoes a story

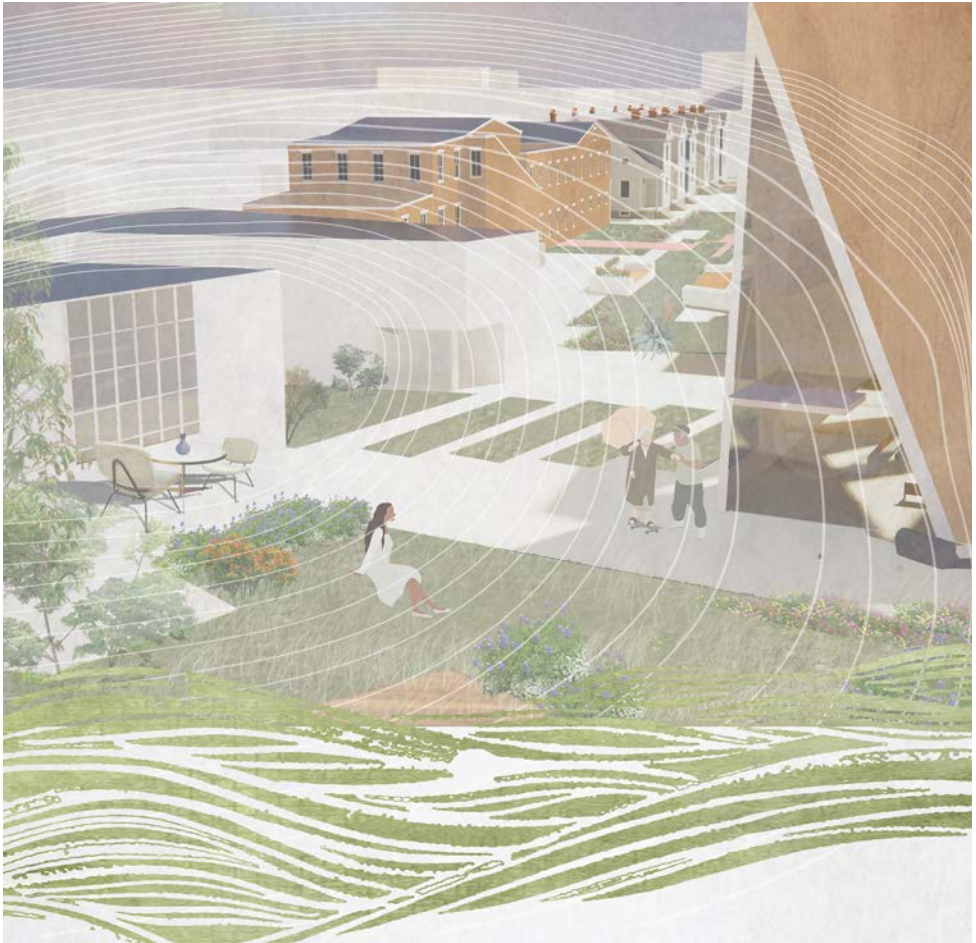
Rooted in the narrative framework developed in Studio B, this project continues the journey through Riga's historic core, reinterpreting the walking route that links the train station to the Old Town's landmarks. At its threshold stands a new cultural intervention: a building embedded within the ruins.

By guiding visitors from enclosed galleries to open platforms, from shadowed remnants to sunlit paths, the design unfolds like a layered story. Each space corresponds to a moment along the route: arrival, reflection, exploration.



Jiaying Chang





## Ceremonial Spaces: Hotel & Wedding Chapel Design

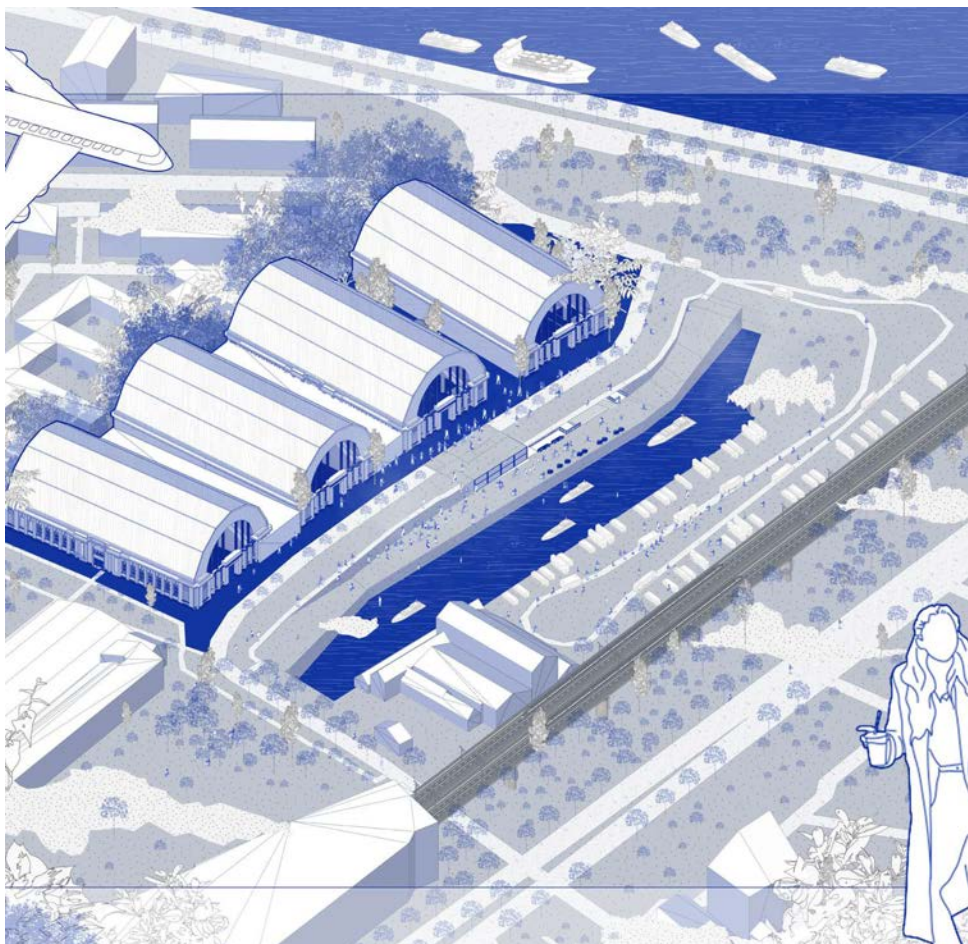
"Contextual Urban Intervention Based on Local Commercial Identity: Integration of a Wedding Chapel and Outdoor Garden within the Block"

In response to the strong concentration of bridal shops along the street frontage, a dedicated zone is introduced within the block to accommodate ceremonial and experiential functions. The intervention includes a small-scale urban chapel for civil or symbolic weddings and an adjacent landscaped garden designed for outdoor gatherings, photography, and post-ceremony interaction. This spatial insertion enhances the commercial identity of the area while offering a community-centered public space that supports both symbolic rituals and daily leisure



Hanyu Zhao





# Reframing Riga Central Market

## Integrating Heritage, Mobility, Public Life

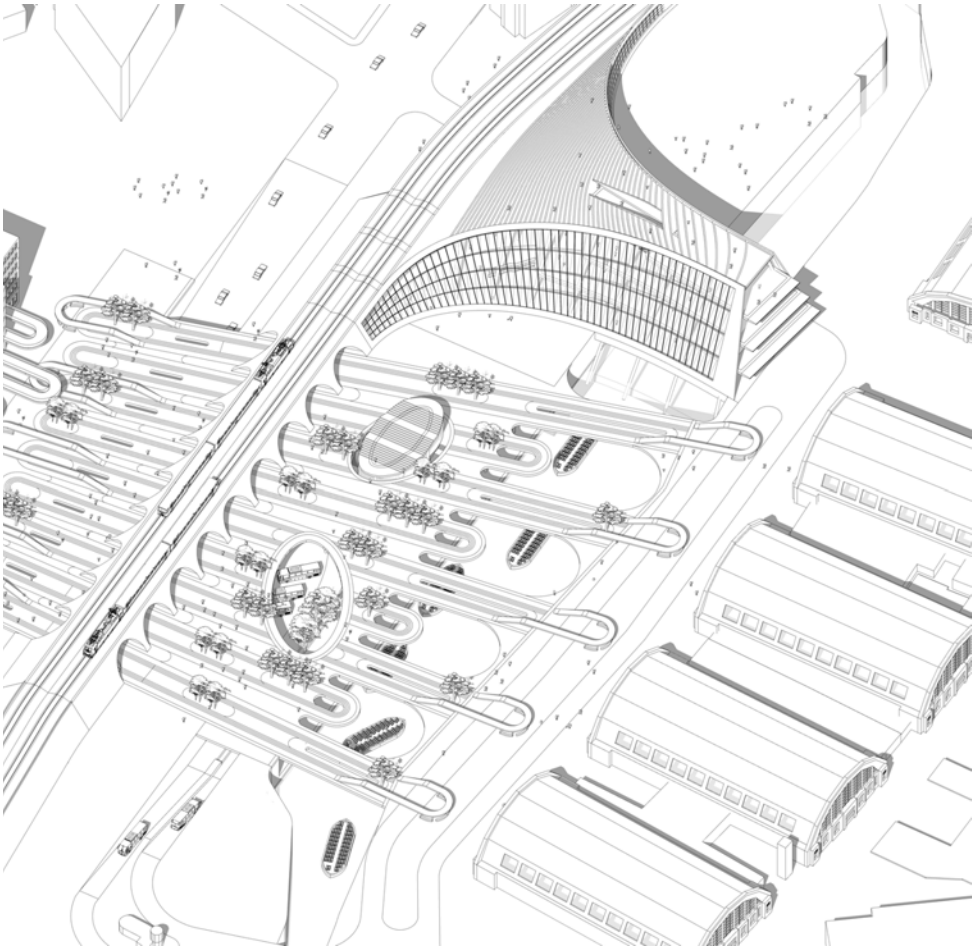
This project reimagines Riga Central Market as a multifunctional civic landmark. By introducing new cultural and leisure programs such as a cinema and fitness center, the design enriches the daily experience of both residents and visitors.

The intervention also reconnects the site to the riverfront through accessible public platforms and landscaped walkways, transforming a previously fragmented edge into a lively urban interface. At the same time, circulation systems are reorganized to relieve traffic congestion, integrating pedestrian, bicycle, and transit flows into a coherent urban network.



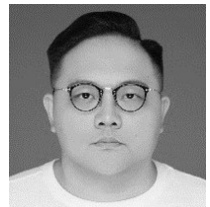
Batu Lu





# Renovation and New Construction

My design in Riga's central transport hub seeks to repair the disconnection between the Old Town and Central Market caused by roads, railways, and bus facilities. Using an "urban acupuncture" approach, the project introduces precise interventions with large urban impact. Brivibas Boulevard is lowered and overlaid with a new pedestrian plaza, reducing traffic conflicts and creating a continuous civic space. The railway viaduct is reimagined as a lively market and promenade, with light, greenery, and commerce enhancing flow and social interaction. A canal shuttle stop and elevated viewing corridors strengthen cultural accessibility, while a new Tourist Information Center links directly to the underground mobility hub, improving visitor services and transport efficiency. Together, these strategies transform a fragmented node into an inclusive "urban living room," where ecological resilience, cultural identity, and public life converge.



**Jinyang Du**



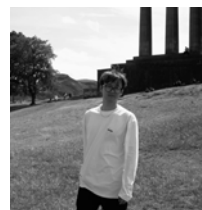


# City Living Room

## A city that connects all directions

"The City Living Room" is a symbolic metaphor for a public space, transcending physical boundaries and embodying the openness and public nature of the city. As a shared space, it facilitates communication and encounters, not only serving as a node for people's connections, but also acting as a medium for interaction between humans and the environment, as well as for perceiving the warmth of the city.

Through the combination of vertical and horizontal pedestrian systems, a rich and layered pedestrian flow network has been created. It has provided users with a diverse range of experiences and a more interactive public environment.



Jiaqi Liu





# Mountain and Valley

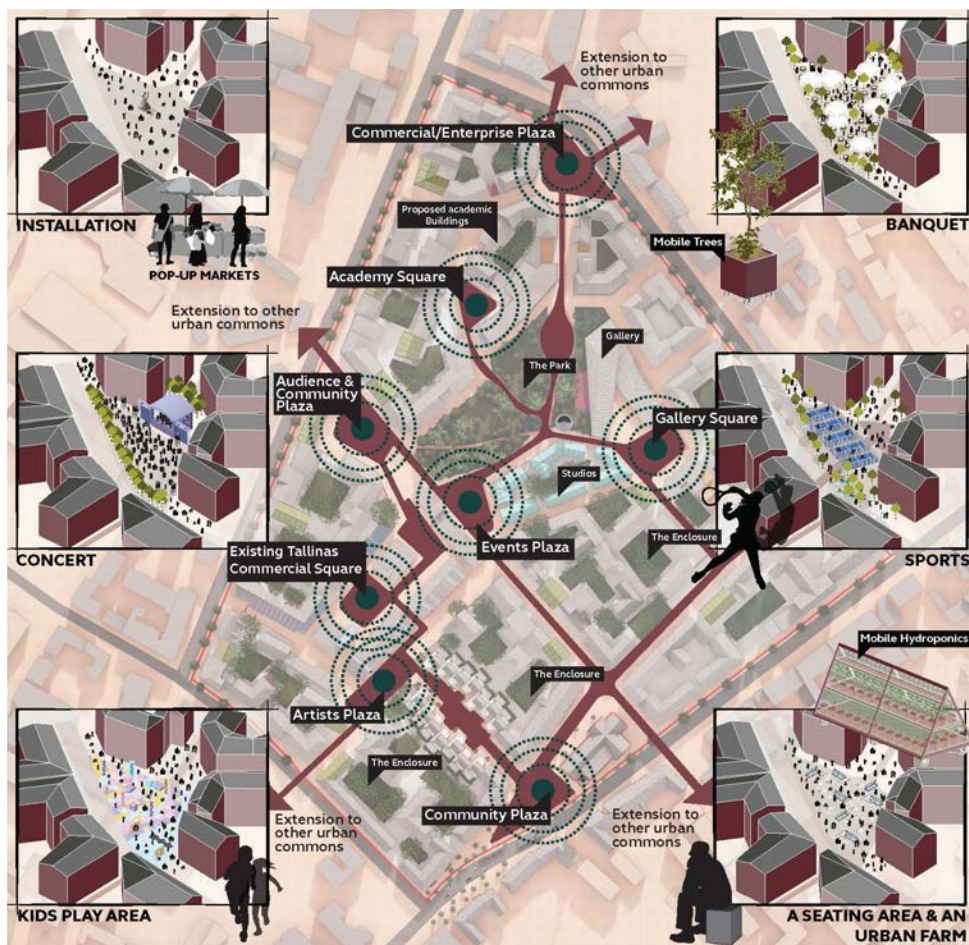
## Design of the Comprehensive Cultural Centre

Architecture is not a purely isolated monument, but a response to the site and the context of the city. At the heart of the design of the Riga Cultural Centre is the dialogue between the "mountain" and the "valley". The National Library of Latvia on the other side of the Daugava River symbolizes the mythical "Castle of Light" and "Glass Mountain", and is the "Mountain of Spirit" representing the city's cultural memory; On the other side of the river, I have created a "Valley of Cultural" with the cultural centre, representing tolerance, openness and publicity, and carrying the exchange and aggregation of the present. One is the peak of spirit, the other is the convergence of cultures, the two look at each other across the river, not only reshaping the relationship between the two sides of the Daugava River, but also giving the city a new cultural landscape narrative.



Mingzhe Cao





# Renegotiating the Urban Commons: Morphing Public Spaces in Riga

This project responds to Riga's declining urban vibrancy caused by car-oriented planning, suburban sprawl, and rising car ownership by proposing a citywide network of interconnected public spaces and pathways that encourage walking, cycling, and social engagement. Drawing inspiration from Riga's Old Town and Gordon Cullen's Serial Vision, the design envisions "nodes" (Enclosures, Squares, Plazas, and Parks) linked by active pathways to create dynamic, adaptable, and community-responsive spaces. The masterplan for Tallinas Kvarāls reimagines the district as a flexible, design-led hub that fosters creativity, sustainability, and ecological urbanism, replacing parking and roads with public spaces and greenery to revive urban life through a vibrant, community oriented walkable city.



Olivia George Saeed





# Riga's Rebirth

## Restarting Abandoned Land

Riga, with its profound historical heritage and post-Soviet urban challenges, faces a dual pressure: the need to preserve its legacy while adapting to contemporary demands. To revitalise an isolated part of the city, the strategy reorganises road hierarchies, restricts car access, and opens public areas to foster social and ecological functions. At the end of the new road, a city hub is established to serve both visitors and residents. This not only improves mobility and environmental quality but also reactivates local identity and public life. In this way, the ageing city is not demolished and replaced, but carefully restructured and reimaged.



Jingpeng Li





# Rebirth of Andrejsala

## Industrial Culture in Creative Cities

This project redefines Andrejsala's post-industrial landscape by preserving its iconic power plant and twin chimney as symbols of a new urban identity. Framed by the "Creative City" theory, the design transforms the district into a vibrant mixed-use core for Riga, blending leisure, housing, commerce, culture, education, and workspaces.

To embrace the future through innovative design based on the preservation of the city's heritage, to enhance the cityscape and the quality of life of its inhabitants, to promote the harmonious development of the local economy, society and environment, and to form a new and diversified center for Riga.



Lemin Fu





# New town arts center

## The heart of a new regenerating area

This project proposes the architectural design for a New Town Community Center, translating a broader urban strategy into a tangible building. The design focuses on creating an inclusive and vibrant cultural hub that acts as a catalyst for social interaction and creative expression, anchoring the regenerating community.

The building integrates a multifunctional program, including a black box theatre, versatile exhibition spaces, hands-on maker labs, and music rehearsal rooms. These facilities are layered to enhance connectivity and public life, establishing a strong dialogue between the new architecture and its surrounding urban context.



Liyang Zhou





# Serial vision of the sprawling arch

## Connecting public and urban memory

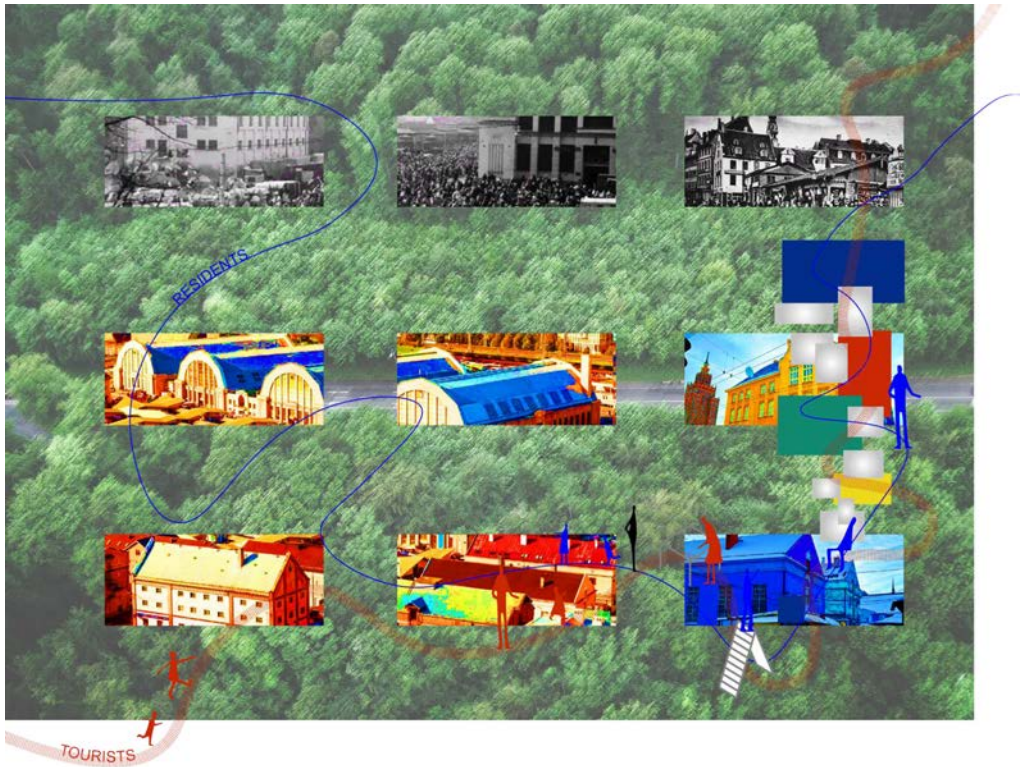
The utopian concept of “serial vision” envisions an ideal path. It’s not just a visual experience; it focuses on the emotional and psychological journey people experience with architecture and the environment as they navigate the streets and alleys, strengthening their emotional connection with the environment.

Incorporating the “arch” element into the architectural design concept respects the local architectural history and cultural heritage, imbuing the area with a unique cultural appeal and emphasizing the impact of architectural visual language on people as they move through the streets.



Zijian Ding





# LIVING INTERFACE

## Reconstructing Daily Life Through Food

In the contemporary city, daily life has become fragmented and internalized. Residents remain inside their private dwellings, while tourists move between monuments along predefined routes, rarely encountering the authentic rhythm of the city. In Riga, Latvia, this condition is intensified by severe population decline, leaving many spaces underused.

The project responds by redefining the interface between people and place through food as a spatial and social medium. It activates the underutilized warehouses on the east side of Riga Central Market, creating a living threshold where production, learning, exchange and shared meals coexist.

By linking cultivation, processing and communal dining, architecture becomes a tool to bring people back into shared spaces and to construct a new kind of publicness rooted in everyday life. This is not merely a marketplace but a multi-layered interface where visitors and residents can dwell, observe, interact and participate.



Zhi Wang





# What's the future of Microrayons

## From function to freedom

This project reimagines Riga's Soviet-era microrayon Purvciems as a more diverse and livable district. Once shaped by top-down planning with oversized infrastructure and repetitive housing, the area now functions mainly as a dormitory district.

The proposal applies the 15-minute city concept, inserting co-working, community hubs, and commemorative landmarks into the existing framework. Through phased adaptation, it balances preservation with new uses, while also suggesting a softer, bottom-up mode of transformation—one that embraces users and environment to achieve humane, incremental change.



Yilu Zhao





# City impression

## A city born of memory

The utopian design concept of “City Impression” draws from Kevin Lynch’s mental map theory. This theory develops an informational perspective, arguing that a city’s appearance is its information. This concept posits that five urban elements—nodes, edges, areas, paths, and landmarks—provide information about a city.

“City Impression” aims to understand people’s needs and redesign underappreciated areas of the city. While meeting these needs, it also improves the street environment and building facades, creating new and comfortable spaces for people. This theory is also applied at the architectural level, connecting nodes in different areas with paths, creating more unique memories and fostering a more positive impression of the city.



Zhen Xu





# A New Life for the Old Town

## Built on a Car-Free Ideal and an Amber Legacy

This visionary project envisions a car-free Riga Old Town where revitalized streets and green spaces foster pedestrian life, cultural activity, and sustainable tourism, renewing the historic core for all.

The Amber Memory and Experience Centre plays a central role in this transformation, celebrating Riga's heritage through galleries and workshops that integrate amber, the Baltic gold, into urban daily life. By weaving this living heritage into the familiar rhythms of the city, the centre supports local artisans, storytelling, and trade while welcoming both residents and visitors.



Yihui Sun





# Light and memory

## Spaces shaped by natural light

The project redefines the site between Riga Central Market and the riverfront as a cultural landmark that unites museum, viewing tower, and office spaces. It responds to the city's lack of a compact venue for history and art, while filling the gap in its skyline with a mid-rise landmark.

Local brick, stone, and fair-faced concrete root the building in its context, while skylit roofs and adjustable fabric structures bring natural light into the interior. Facing the waterfront, terraces frame views of the city and the sea, making the project a dialogue between memory and horizon.



Tianyi Zheng





# A 'weave' in Riga's urban space

## A tapestry of culture and community

The project responds to the city's multilayered context by reconnecting fragmented historic districts within the UNESCO protected zone. The city's identity is shaped by the historic water systems, yet these remain disconnected today - divided by uneven development, infrastructure and a declining local population. The proposal envisions urban space as a tapestry - weaving cultural heritage and community, reinforced by the city's future vision to build on local skills. The intervention introduces a new urban grain, stitching together the canal, market district, old warehouses and the riverfront as a unified 'place' through public space continuity, drawn from the city's morphology and lived experience.



Swathe Sivagami





# Eye of Riga

## Viewing Place with white walls and glass

The project aims to attract local residents and tourists to gather here through open spaces, diverse functions, and multi-dimensional viewing areas, increasing connections with important nodes such as surrounding waterfront areas and markets. Enhancing cultural and residential communication through public spaces.



Tianwei Cai





## Between Sail & Street“

“A semi-public waterfront node where residents, tourists, and commuters converge, pause, and belong.” Between Sail & Street lies a layered waterfront threshold — where the rhythm of the river meets the pace of the city. This project reclaims Riga’s edge as a space of transition and belonging, offering semi-public platforms for residents, students, workers, and visitors to move, gather, and pause. Here, mobility meets community, and circulation becomes place.



Sihan Zhu





# Frozen Time in Riga

## Regeneration Heritages in Riga's Old Town

In a utopian context, the project incorporates the abandoned buildings of Riga's old town into the framework of regeneration, not simply restoring them but giving them a new life. They are transformed into an amber cultural centre, a link between the past and the future. It serves the daily community activities of local residents, provides studios for local artists, and offers a place for tourists to experience amber culture. It is built as a sustainable cultural node for the future, adapted to local conditions.

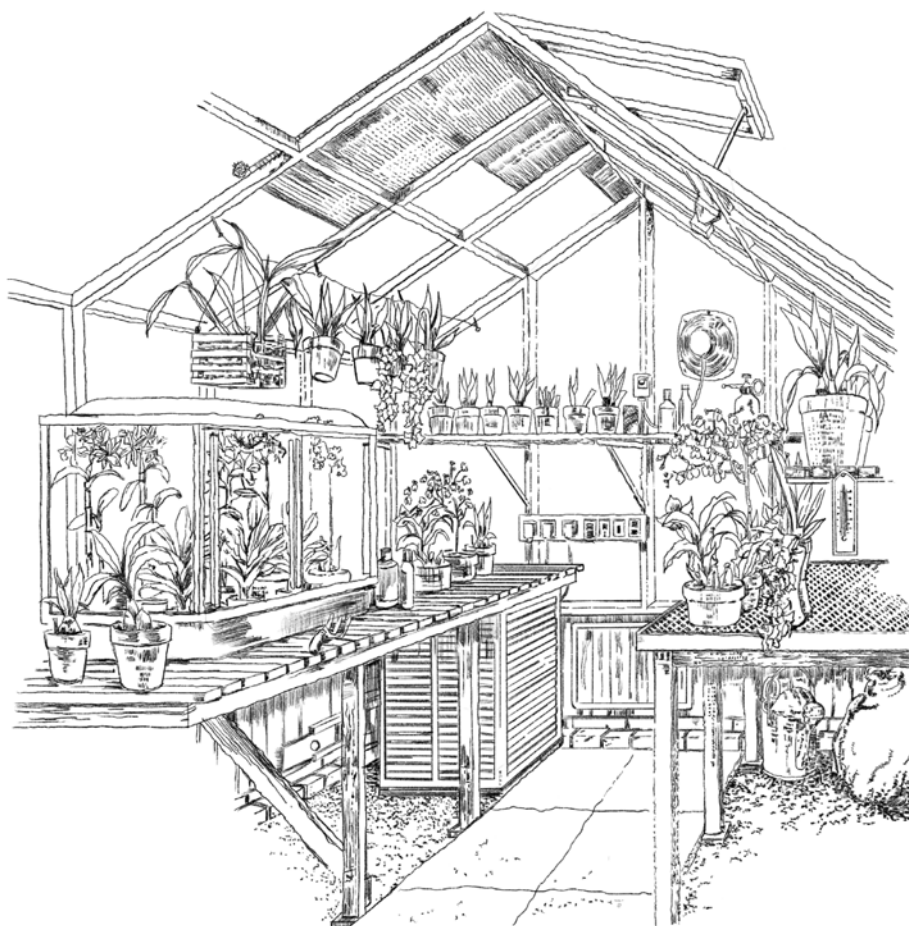
The design deliberately emphasises the contrast between the old and the new: the historic building retains the traces of time and spatial memory, while the new volumes are made of perforated weathering steel panels, whose texture echoes the warmth and translucency of amber in the changes of light and shadow. Through this contrast, the heritage of the building is shown while the lightness and foresight of the contemporary design is emphasised.

The Cultural Centre is not only an architectural regeneration, but also a revival of the neighbourhood, a "frozen time" for Riga, transforming the ruined part of the old town into a utopian place that carries the emotions of the community and attracts the attention of outsiders.



Suiyue Xing

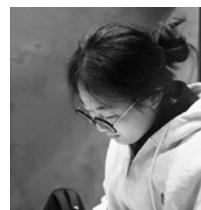




# Food, Space, Future

## From Urban Farming to Community

This proposal centers on an urban farming ecosystem operated by the market itself. Surrounding buildings are reprogrammed into three functional clusters: public-facing amenities for residents and visitors, an education and exhibition center in collaboration with local schools, and a private zone for research laboratories and processing workshops. The farm is divided into three zones: a participatory garden for community planting and harvesting, a cultivation area supplying fresh produce to the market and restaurants, and a specialized sector for professional growing and experimentation. Together, they create a vibrant, productive district rooted in sustainability and local engagement.



Qinyuan Hong





# Harvesting Light

## The Riga Vertical Agriculture Institute

In the green and fertile city of Riga, we sought to paint a more futuristic picture. From sketching out a systematic blueprint for a circular city to constructing a community experiment in vertical farming, the result was this Agricultural Research Institute—a micro-city that breathes, produces, and thinks, vividly illustrating the form of a sustainable future.



Yutong Peng





# Livu Square Market Hall Complex

## Space for All Seasons, All People

This project is located in Livu Square, in the heart of Riga's Old Town. It reinterprets the traditional market typology by vertically integrating functions such as fresh food trading, exhibition, dining, theatre, and co-working, forming a public space that is accessible year-round, usable throughout the day, open to the city, and respectful of historical context. Through operable door panels, a double-layer perforated aluminum façade, and vertical zoning of above- and below-ground spaces, the building adapts to seasonal changes and becomes a vibrant spatial container that coexists with the city's urban fabric.



Huanzhi Mo





# Waterfront Theatre

## The sound road in Riga

The project aims to create a musical route in Riga, using the landmark “Bells Ringing Nodes” to guide people’s way through the old town, from the oldest St. Peter’s Church to the future Waterfront Theatre.

The waterfront theatre fully responds to the urban context. The development of the building and the surrounding public space can bring a large amount of public space to the old town of Riga, enrich people’s leisure activities, and make up for the lack of a rich Latvian music history.



Zinan Yang





# Andrejsala ‘REBIRTH’ New Port, New Horizons

Latvia is one of the most beautiful travel destinations in the world, known for its captivating natural landscapes and historical architecture. The port area serves as the gateway to Riga, and it forms visitors' first impression of the city. So in StudioB, my vision is to revitalise the Port area into an active Gateway to Riga.

In StudioC, I will continue to explore architectural space. Located in the Riga Port, this project is both a monumental building and an open and shared cultural infrastructure. Through the architectural language and narrative structure, it will show Latvia's national story, port memory and future imagination, providing citizens and visitors with an experiential journey through time and space.



Miaoru Zhou



# Dwelling Lab.

Dwelling and Urbanism was founded to examine longstanding challenges in housing quality and affordability in the United Kingdom, by considering housing production, consumption and representation. Our Urban Laboratory is committed to examining dwelling as housing architecture influenced by housing standards and design governance, and more abstractly, as a set of social processes with potential to generate or inhibit a sense of home for residents that can be fostered by architects and other practitioners through their creative endeavour.

This year's project, Suburbia Reimagined, responds to this year's theme of new utopias, by encouraging students to engage with the theoretically contested and intellectually fertile concept of suburbia, and the social and cultural potential of the suburbs, suburbanites (residents) and suburbanism (ways of dwelling in the suburbs). The project's practical concern is to explore how housing innovation and emerging approaches to design governance can foster healthier, happier and more affordable neighbourhoods.

Project site: Manchester, UK



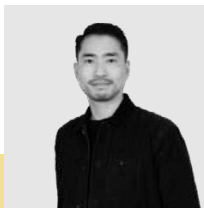
## Teaching Team



**Dr Dhruv Sookhoo**  
Lab Lead



**Dr Azreen Azlan**



**Chris Wong**

## Contributors

Bea Martin  
Inscriptive Practice, MSA

Sandeep Balagangadharan Menon  
MSA

Dr. Mark Hammond  
MSA

Harry Hamberger, Shawn Adams, Evan Hall, Erica White, Kwame Ohene-Adu  
HTA Design LLP

Idil Akkuzu  
International Research Fellowship, TUBITAK

Laura Broderick  
Building Centre

Dr Aurélie Cauchard  
MMU

Kevin Radford, Alison Coutinho  
Mace

Josh Hymer  
Lichfields UK

Tom Mitchell, Robert Hodgen, Kruti Patel  
Metropolitan Workshop

Rhia Monaghan  
Manchester City Council

Joe Woolley  
Urban Splash





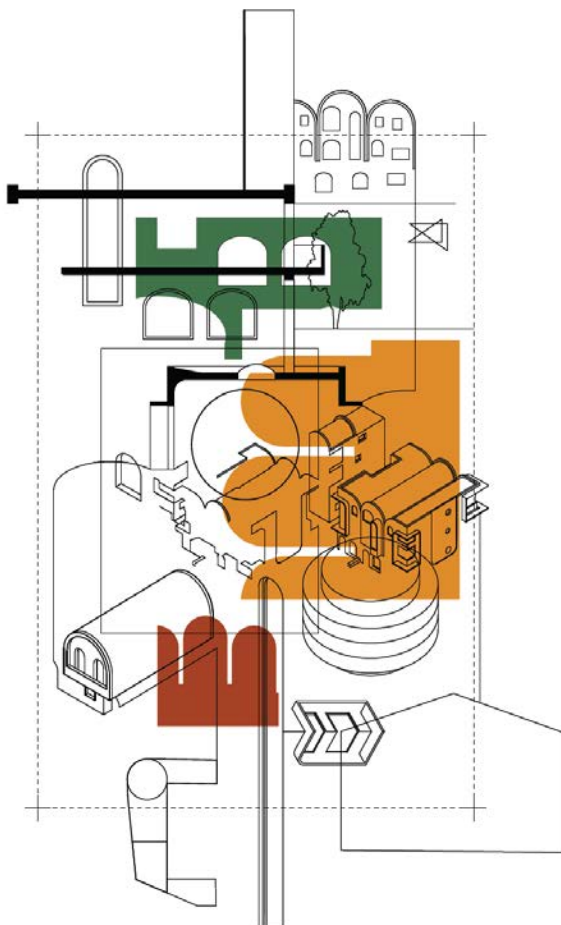
# Creating Affordable Lifetime Neighbourhoods in Collyhurst Village

Lifetime Neighbourhoods explores a research-led framework for Collyhurst Village that couples modest suburban intensification with careful repair of existing streets and courtyards. Through an experimental design code, it coordinates new housing with incremental upgrades to current homes, including options for vertical extension to enable intergenerational living, and embeds small community service hubs in repaired courtyards; treated less as regulation than as a phasing device, the code is tested for its capacity to reduce planning risk, support cross-subsidy for long-term social tenants, and align renewal with residents' wish to stay or return, moving toward a more inclusive and adaptable neighbourhood.



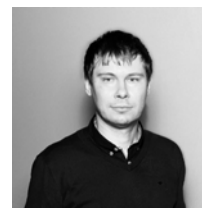
Shufeng Zhang





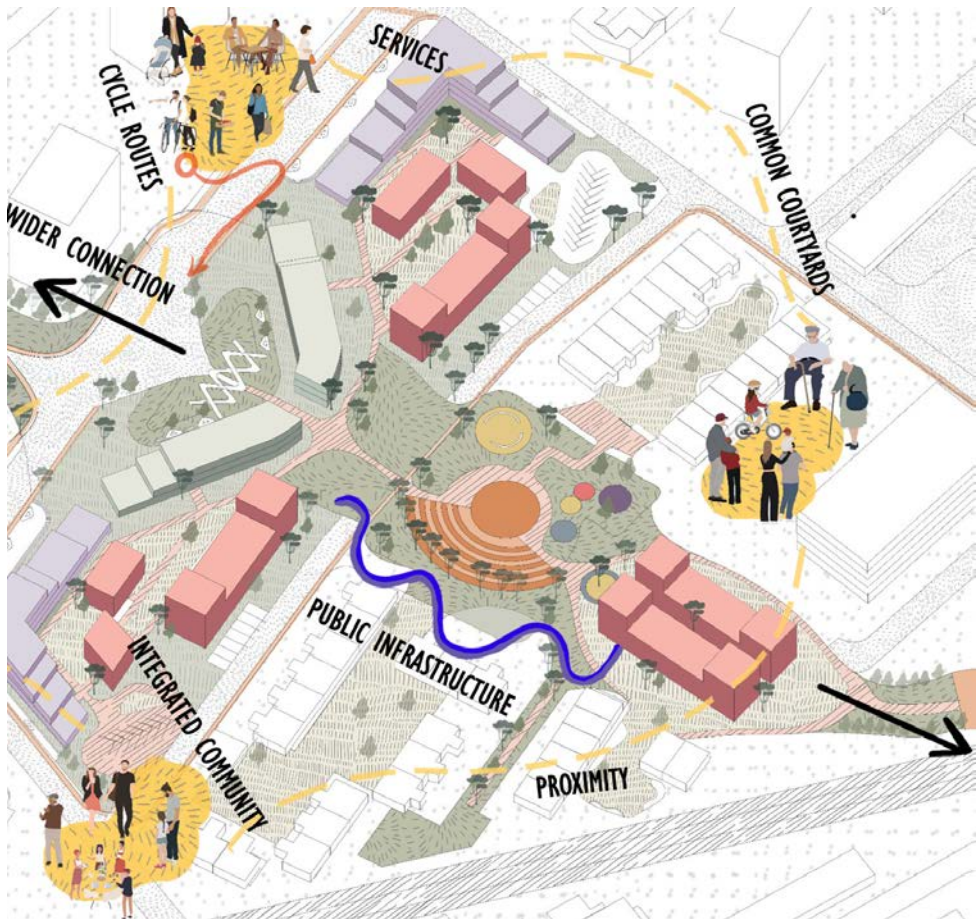
# Connecting South Collyhurst through shared spaces

The proposed vision re-imagines South Collyhurst by challenging suburbia, thus offering a pedestrian-centric and socially engaging neighbourhood for a diverse social body. The masterplan proposal addresses social isolation, the city's housing shortage, and local characteristics, embracing key values of connectivity, diversity, and distinctiveness. The vision proposes a car-free, pedestrian-friendly network of shared open spaces, featuring safe walking routes through distinct character areas. These spaces aim to meet residents' desire for opportunities to socialize, benefiting both South Collyhurst and nearby neighbourhoods.



Kristaps Kalvans

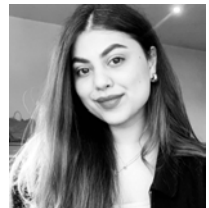




# Beyond Boundaries

## A socio-economically inclusive suburb

My proposition envisions reactivating South Collyhurst in Victoria North as a socially cohesive, economically vibrant suburb. Historically impacted by postwar demolitions, high unemployment and vacant land, the area now suffers from isolation and out-migration. The design introduces co-housing with live-work studio apartments, supporting home based businesses and local enterprise, while reimagined backyards connect to communal spaces, creating a seamless flow from private to public. This approach cultivates socio-economic opportunities, intergenerational engagement, and community resilience, challenging conventional suburban models while restoring social vitality.



Fatima Riffat





# Living Together

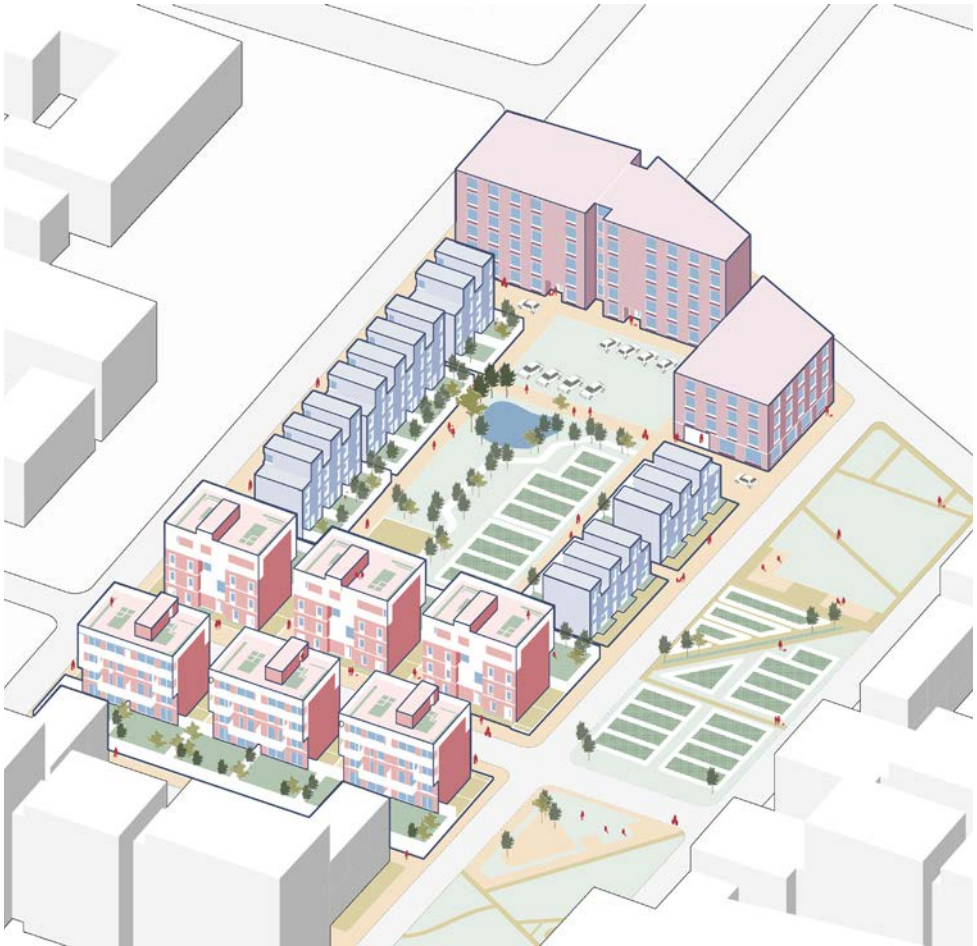
## Building Inclusive Urban Cohesion

South Collyhurst is a neighbourhood shaped by streets, green spaces, and communities. With ageing populations, new residents arriving, and a legacy of isolated housing types, the area faces a deep challenge: how to rebuild belonging, not just housing. This project envisions a future in which people of all generations—elderly, young workers, families, and all—live not in parallel, but in connection. The goal is to design for cohesion: a sense of place and relationship, built through shared spaces, visible thresholds, and everyday encounters.



Yuyang Du





# Resilient New Cross:

## Design for the Future Adaptive Affordable Communities

This project explores how high-density urban sites can become socially inclusive and environmentally responsive communities. Located in the New Cross area of Manchester. The design proposes a mix of building typologies—from duplex apartments and terraced houses to high-density flats—offering flexible living choices for diverse age groups and lifestyles. By embedding features like rooftop gardens, green courtyards, and water systems, the neighbourhood promotes ecological sustainability and daily interaction between residents.

The project reflects on affordability not only as a housing cost issue but as a spatial and social quality. Co-living provides flexible housing for young residents, while intergenerational living supports family ties and shared care. Together, these models create a resilient framework for future urban living, where green infrastructure, housing diversity, and community networks work as one system.



Xiang Li





# Explore the potential of suburban

## OLD SUBURBAN—TRANSITION STAGE—NEW SUBURBAN

This project aims to revitalise Collyhurst Village, a typical edge suburb, through a strategy of gradual spatial reassembly. It introduces small-scale insertions, agefriendly housing, shared green spaces, and Home Zones to enhance liveability, foster intergenerational interaction, and build collaborative neighbourhood networks. Emphasising respect for existing community patterns and residents' sense of belonging, the design advocates a sustainable, adaptable approach to suburban regeneration—moving beyond demolition toward evolution for recreation, relaxation, and community gatherings.



**Baicheng Chen**





# Becoming an accessible Suburbia:

## Delivering Affordable Housing for All in Collyhurst Village

The utopian urbanistic concept is "Becoming an accessible Suburbia: Delivering Affordable Housing for All in Collyhurst Village". This proposal offers a well-reasoned and deliverable approach to improving accessible housing in Collyhurst, demonstrating a strong understanding of the specific contextual factors and theoretical perspectives relevant to suburban development and accessible housing design.

Focusing particularly on the elderly population and rethinking living conditions, the design seeks to create environments that are comfortable and accessible.



Lingyu Zhou





# All-Age Wonderland

## Building a Multi-Generational Cosy Home

South Collyhurst's future development will remain resident-centered, ensuring that the community belongs to its people. By addressing the needs of its aging population while welcoming younger groups, the neighbourhood will transform into an age-inclusive community.

Through diverse housing options and a central daily interaction core of shared spaces and services, it will support different family structures and life stages, creating a community that is inclusive, vibrant, and reflective of its residents' spirit.



Mengfei Hou





# Biophilic Urbanism:

## Designing Resilient and Sustainable Communities

My vision is to create a residential community where natural health and human habitation coexist, creating a sustainable, liveable and ecological home for the residents of Victoria northern.

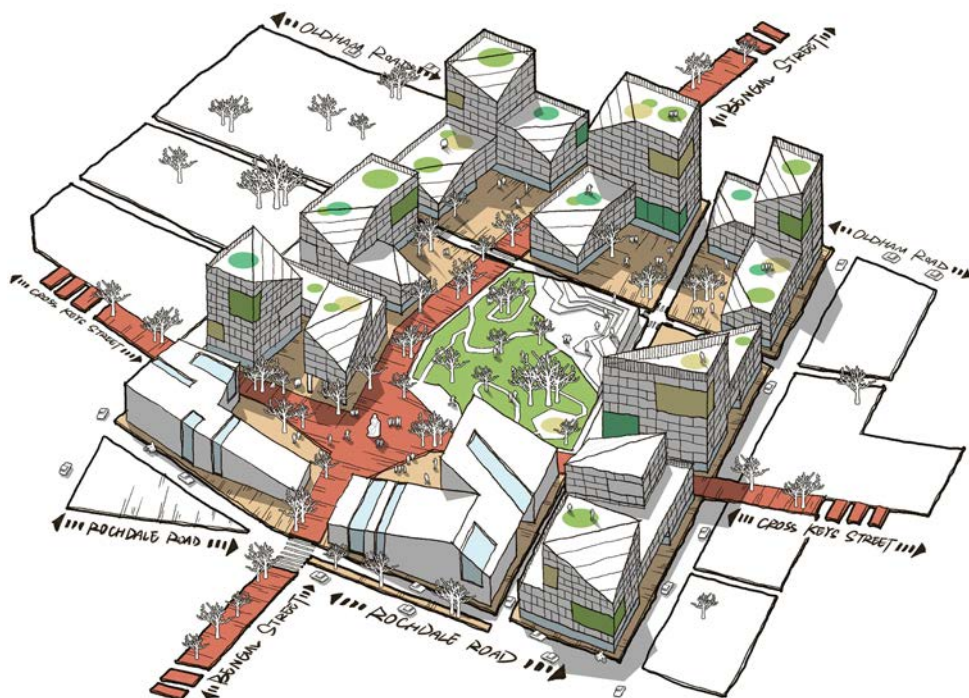
The design is centred on a green hub that connects the city centre with the suburbs, while integrating into the surrounding green space system to achieve organic interaction between the city and nature through continuous greenways, eco-corridors and community public spaces.

Sustainable building strategies such as atrium gardens, vertical greening and natural lighting are adopted to reduce carbon emissions, enhance environmental quality and provide residents with a daily experience of being close to nature. Eventually, it will become an ecological oasis where nature, life and the city merge.



Ruolan Wang





# A New Festival City for New Cross

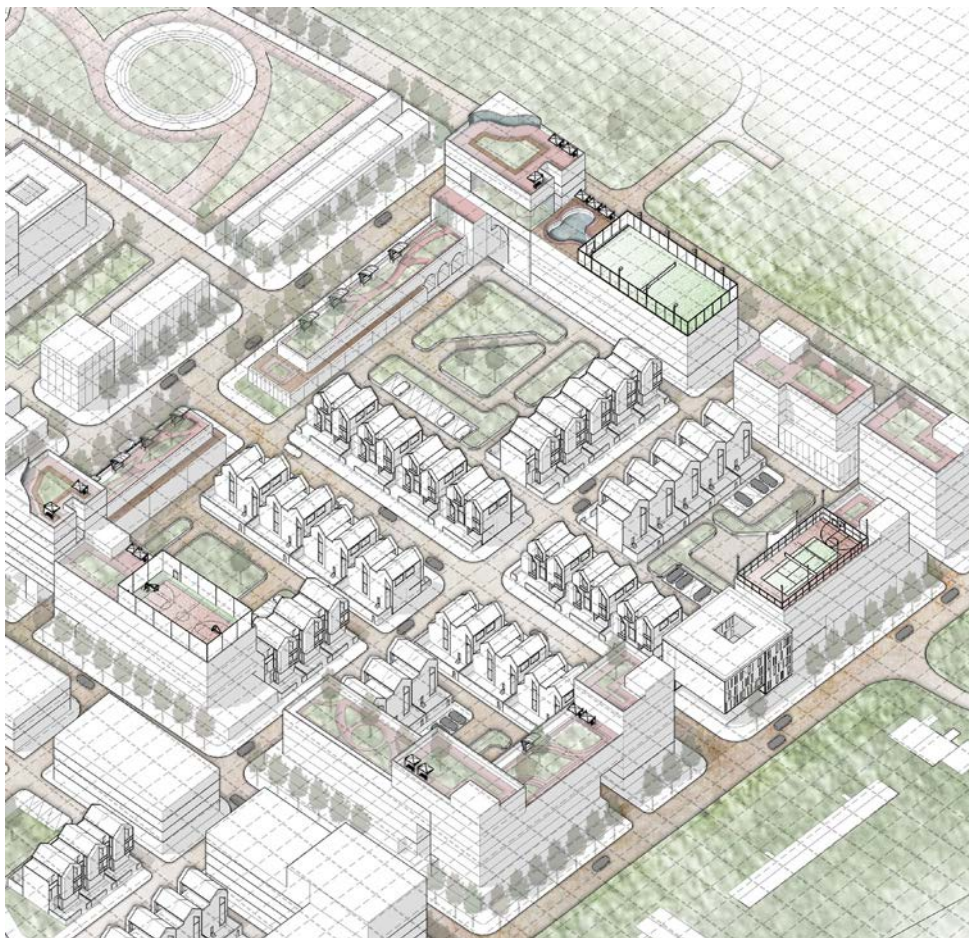
Compared with the mature city centre, suburban houses are mostly scattered and independent, with limited public spaces for social interaction. Residents build their own homes, and large-scale events are rare. Therefore, I aim to design a suburban community with more venues for daily and festive activities, strengthening connections and fostering a distinctive community culture.

As the gateway to northern Victoria, the community's diverse public activities can also attract visitors, enhance the suburb's appeal, and stimulate the wider development of northern Victoria.



Saimeng Feng (Simon)



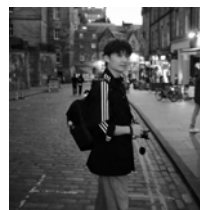


# InterGen Living

## Shared spaces, stronger bonds

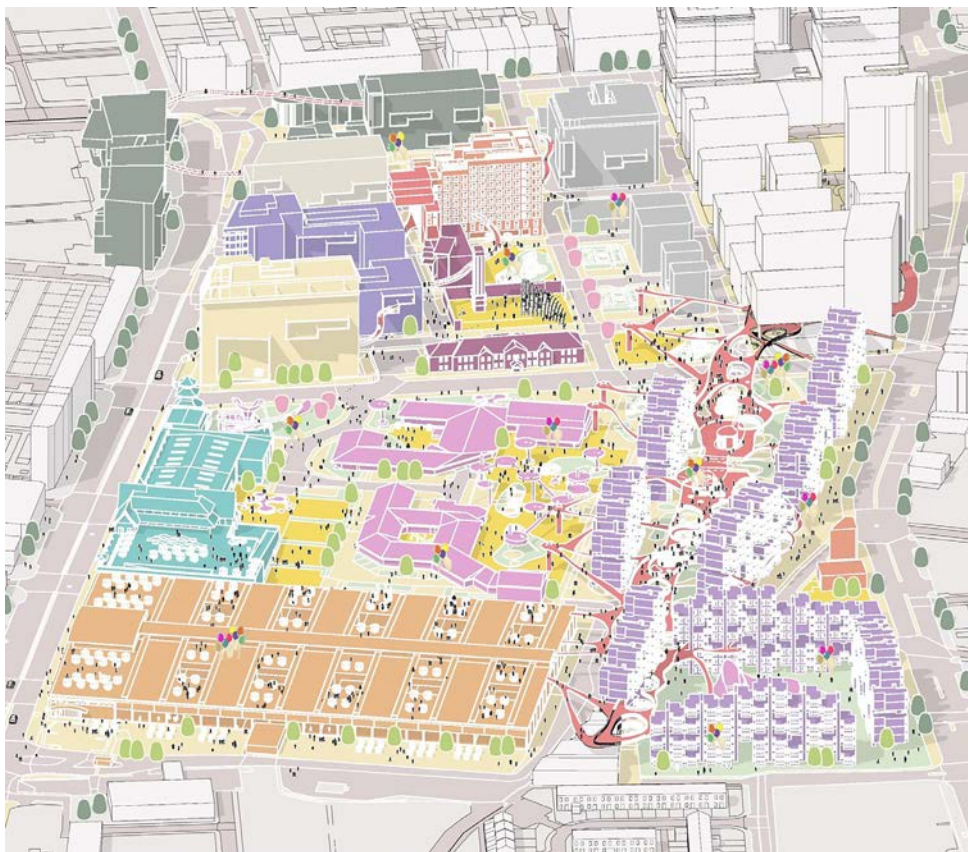
InterGen Living's vision is to create a harmonious, intergenerational community in South Collyhurst, a suburb of Manchester. Through a landscape-driven approach, green spaces, public areas, and shared facilities become central places for recreation, communication, and community life.

Rooted in heritage yet forward-looking, the design blends historical identity with modern urbanism. It promotes sustainability, accessibility, and flexibility, shaping a vibrant and inclusive environment that supports intergenerational living and a strong sense of belonging.



Tianqing Pu





# A 'pre-booking' Community

## The utopian community along urban edge

### Phase 1: short-term planning (2025-2035)

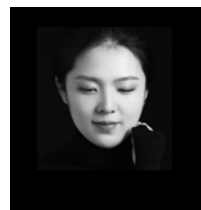
- a. Construction of a High-quality and multi-functional prefabricated house block
- b. Renewal of the existing buildings (Royal Mail, Chinese market and fire station)
- c. Improvement of the living environment (active streets, functional green space, playground and other public spaces)

### Phase 2: long-term planning (2035-2050)

In a utopian context, post-scarcity society (typically through advanced automation and AI): Jobs done out of economic necessity would disappear. People would be freed to pursue passions, art, science, hobbies, and personal growth.

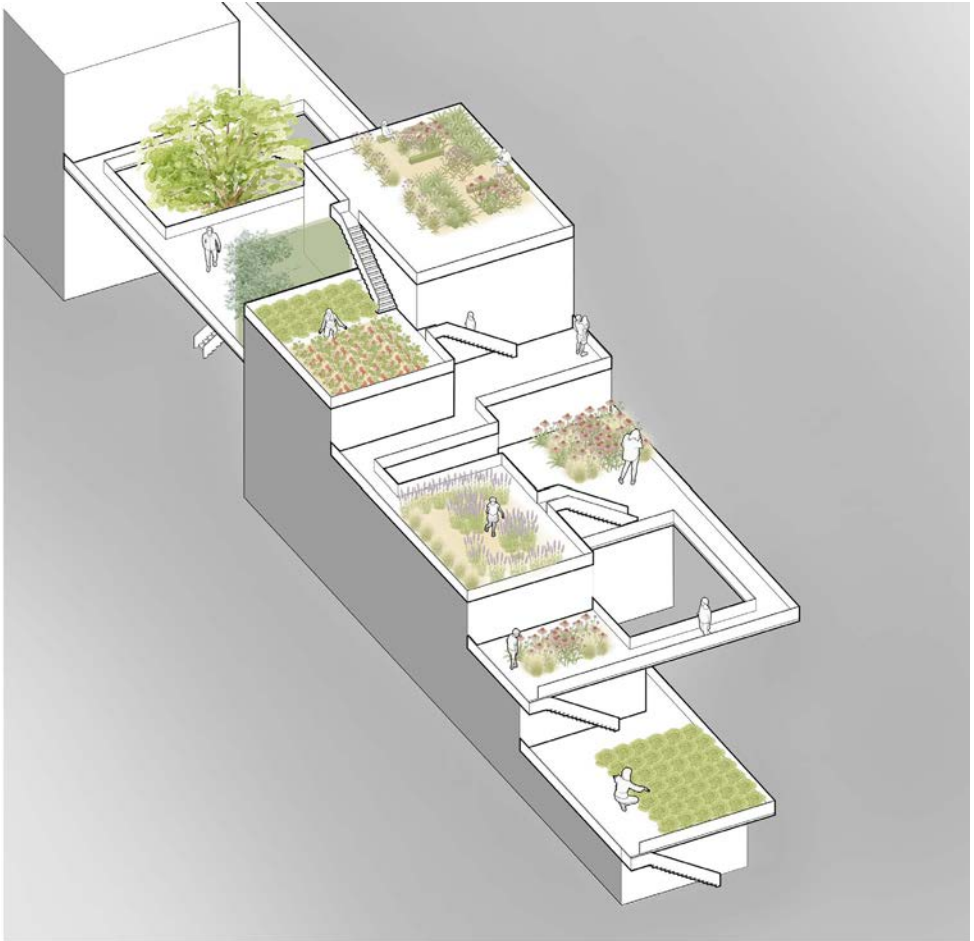
The 'pre-booking community' will be a response to this phases: Activities and events will be prebooked and the appearance of buildings and public spaces will change with different scenarios.

- a. Transformable flying house
- b. Removable and functional bridge
- c. Public atrium in the existing apartments



Xinyan Li





## Ecocity: Integrating Greenery and Living

The suburb is a vibrant, localized living space where people can connect with nature. The utopian urban concept of "scattered mountains" envisions an ideal suburban environment. By creating diverse green spaces such as rooftop gardens, greenhouses, and green parks, and integrating sustainable design principles, the suburb not only maintains its green coverage but also enhances the ecological and functional value of these spaces.

The organic integration of landscapes, co-spaces, and residential areas strengthens the connections between different functional zones. Shared spaces interspersed within the living environment enhance social interaction while providing residents with a comfortable and livable experience. Overall, this layout creates an innovative, ecofriendly, and functionally rich green community.



Xueyun He(Evie)



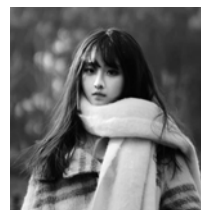


# Culture in the Making

## A Co-Creative Community for Digital

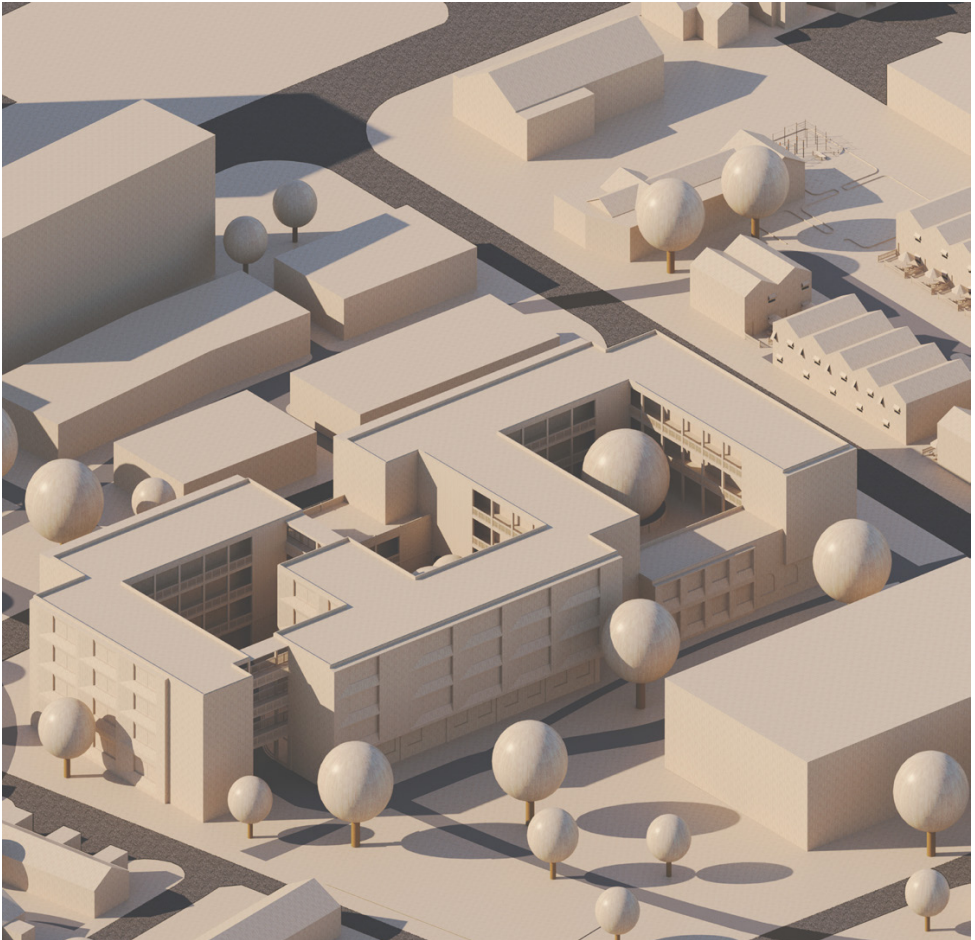
This design connects digital nomads with local residents through a spatial framework of co-living and co-working, fostering a community of integration and harmony.

The neighborhood, centered around slow behavior, connects diverse residential units with open public spaces, fostering daily interaction. The arch bridge has been revitalized as a core node for cultural exchange and co-creation, hosting skill exchanges, artistic exhibitions, and collaborative activities, fostering a continuous flow of life and culture. Collyhurst has thus become an urban cultural factory that perpetuates memory and inspires creativity.



Yulan Li





# Sustainable Living Hub

## Age-friendly and inclusive community

The project addresses the most pressing local issues. Its aim is to integrate sustainability and high-quality living into everyday life by improving infrastructure and designing spaces for people of all ages.

By increasing housing density and adding local amenities such as playgrounds, activity centres and parks, the project will encourage residents to access services locally, promoting convenience and sustainability. New buildings will incorporate local elements. These will also encourage social interaction and a sense of community.



Yuqin Yang





# Interflux

## A suburban community in motion

Interflux defines a spatial condition that is soft, drifting, and perpetually open. It captures the evolving nature of suburban space — particularly in a site like New Cross, where the boundary between city and suburb is constantly in flux. It resists fixed forms and singular purposes, instead embracing movement, multiplicity, and spatial negotiation.

The vision is to create an inclusive and adaptive neighbourhood shaped by fluid movement, soft boundaries, and evolving shared uses — a living system that grows with its community. It embraces diversity in lifestyles, spatial rhythms, and social interactions, allowing people of different ages and backgrounds to coexist and thrive.



Zhihui L iu



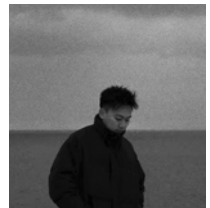


# A Suburb Carpet

A New Kind of Suburban Living — Landscape as the Carpet to Live On

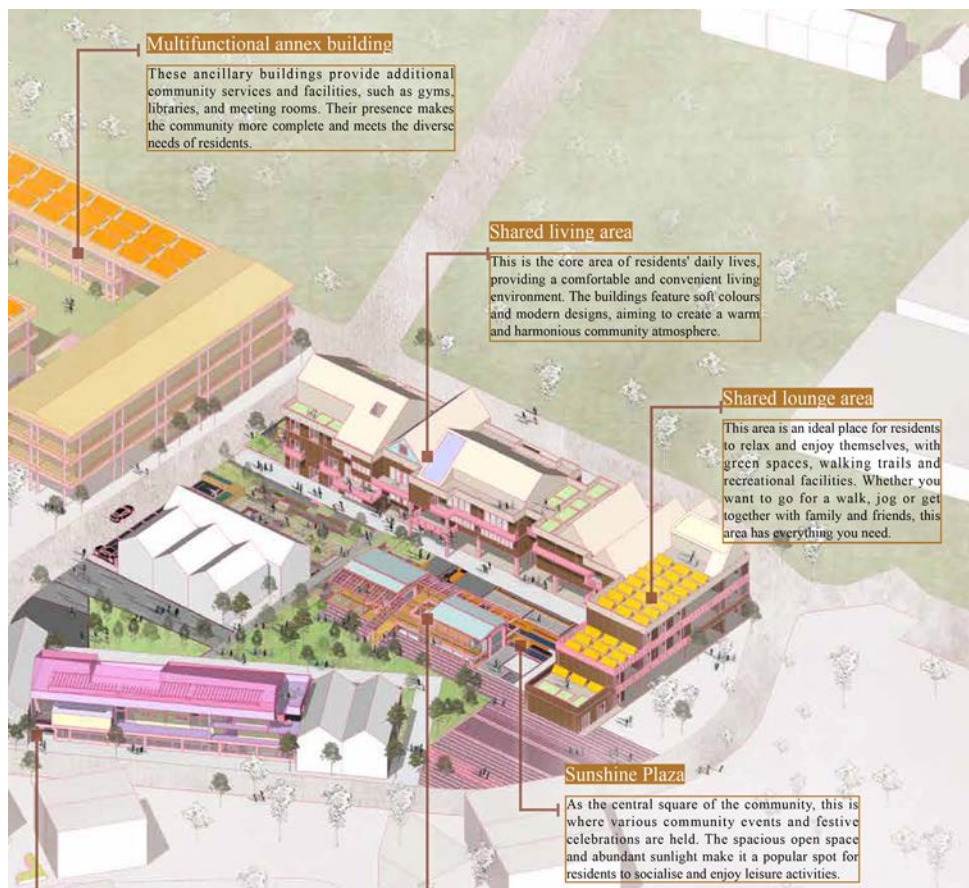
The vision of A Suburb Carpet reimagines suburban living as a seamless weave of landscape and dwelling. Here, green space is not a backdrop or leftover edge, but a continuous carpet of life on which homes, streets, and communities are placed. This approach transforms Collyhurst into a place where the landscape becomes the framework of suburbia—supporting play, movement, resilience, and belonging.

The suburb carpet offers a new model of living: layered, permeable, and inclusive, creating a neighbourhood where the natural and the social are inseparably interwoven.



Zhuohui Gao





# Green and Grow

## International Harmony CO-living Community

This project proposes an innovative transformation of traditional urban row houses, commonly found in Chinese cities. Through a series of interventions, it aims to convert underutilized attic spaces and rooftop areas into a vibrant frontier for intergenerational interaction and social engagement.

The core idea is to foster a symbiotic relationship between younger and older residents, turning negative boundaries into positive community assets. The design integrates sustainable technologies, urban agriculture, and community sharing functions to ultimately form a self-sufficient and resilient "Rooftop Cooperative."



ZihanQin



# Prototype Lab.

This Urban Lab is using emerging digital technologies to implement liveable solutions in the urban context. Digital technologies have now become an inseparable part of contemporary living.

We, at the Prototype Lab, underpin our work on truly Smart cities, academic research that has been developed by the Lab Lead (Dr M. Cavada) which is human centre and aims at liveability. Specifically, we explore how these technologies should be used to solve urban issues and develop solutions appropriate for a civilised society. This lab develops a critical approach to emerging technologies through urban proposal and demonstrates that digital technology and AI can be tools for human prosperity through governance, aimed at sustainability, community living, health and wellbeing, security, equality, and similar human values.

Project site: Karystos, Greece



## Teaching Team



**Dr Marianna Cavada**  
Lab Lead (Studio A and B)



**Dr Glen Wash Ivanovic**  
Lab Lead (Studio C)



**Curtis Martyn**

## Contributors

**Marianthi Ntemirtzoglou**  
Visiting tutor, Chartered Architect,  
RIBA, ARB, TEE-TCG

**Clark Geddes**  
Principal at Clark Geddes,  
Consultant to Prototype lab

**Alberto V. Yebenes**  
Lecturer in Architecture and Adaptive Re-Use

**Bea Martin**  
Inscriptive Practice

**Perry Kulper**  
Professor, Taubman College of Architecture,  
Visiting Professor

**Lefteris Raviolos**  
Mayor of Karystos, Greece

**Maria Verouhi Lemonia**  
Karystos City Deputy Mayor of Karystos

**Vaggelis Alexandris**  
Deputy President of the Municipal Community of  
Karystos

**Alexandros Ioannidis**  
Minister Plenipotentiary, Consul General of Greece in  
Manchester, UK

**Dr Simos Vamvakidis**  
Assistant Professor, Department of Architecture,  
University of Patras





# The Connected Settlement

## Cycles of Honey, Faith, and Place

The Connected Settlement reimagines Karystos as a modular civic core haped by its honey industry. Hexagonal and rectangular forms echo the beehive, while elevated walkways and staircases serve as connective threads that weave fragmented blocks into one fabric. The settlement grows between mountain and sea, rooted in both landscape and tradition.

In this vision, markets, churches, and gathering halls are joined like cells of a hive, where cycles of faith and harvest overlap. The design transforms separation into unity, offering Karystos a new architectural order that honors its past while shaping its civic future.



Xinyu Zhang





# A harbor of senses

## Where water, land, and life entwine in harmony

The utopian concept of a “harbor of senses” envisions a coastal space where maritime life, cultural performance, and natural landscapes merge into an immersive experience. A fish market, pier, theater, seafront promenade, green areas, and an underwater restaurant together awaken all five senses, turning the waterfront into a place of vitality and healing.

Here, the harbor is not only for trade and passage but also a living stage where daily rituals and shared moments unfold. Through the interplay of water, land, and architecture, the shoreline becomes a sanctuary of connection, renewal, and collective well-being.



Hongbo Yang





# Connection By Layering

## Reimagining Coastal Life in Karystos

Reframing the Edge: A Regenerative Viewpoint

This design reimagines Karystos' fractured coastal boundary as a layered threshold—where built space and natural seascape converge through curated visual and spatial experiences. From the sheltered courtyard, the architecture opens toward the Aegean, framing the horizon and inviting a sense of renewal. The view is not merely scenic—it is structural: guiding circulation, anchoring identity, and transforming the act of looking into a ritual of reconnection.



Zhengang Guo





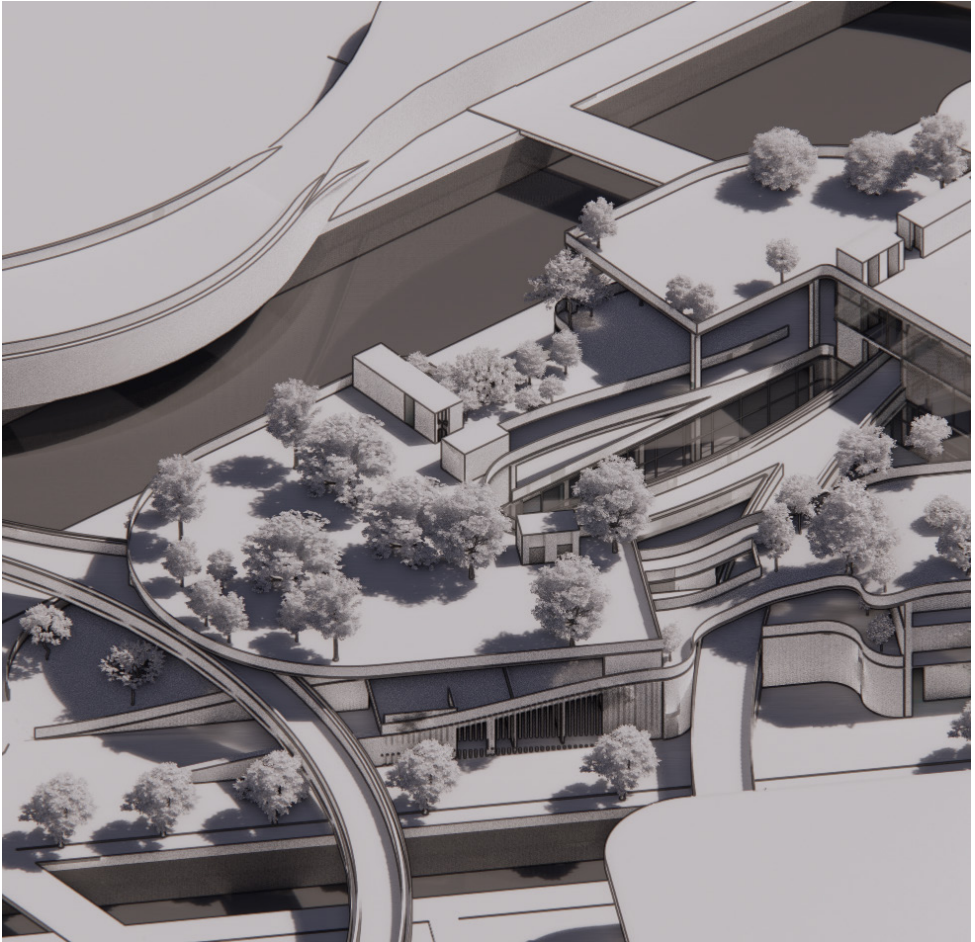
# Urban Linear Park & Cultural Museum – A Resilient Promenade for Karystos

I envision Karystos as a place where resilience, culture, and community come together to create a more inclusive and livable town. The Urban Linear Park reimagines the promenade as a continuous net, linking key landmarks and open spaces while enhancing accessibility and daily life for locals and visitors. The Museum of Karystos serves as a cultural anchor, celebrating local identity through stone craftsmanship, agriculture, and Aegean life. Together with the Market Plaza, it transforms the town into a destination for exploration—where flood resilience becomes both ecological infrastructure and an everyday cultural experience. This strategy, guided by equity and local character, prioritises people over cars, strengthens the quality of public space, and supports local industries such as tourism and fisheries. In doing so, it fosters pride, belonging, and cohesion, ultimately shaping Karystos as a “City for Life” rooted in identity, diversity, and shared resilience.



Tzu Chu Hsu





# Aether Wellness Retreat

**A seaside wellness retreat offering the best healing for both body and soul**

Located on the coast of Karystos, Greece, this project reinterprets the traditional sanatorium as a modern Wellness Retreat, addressing isolation, seasonal economy, and unemployment.

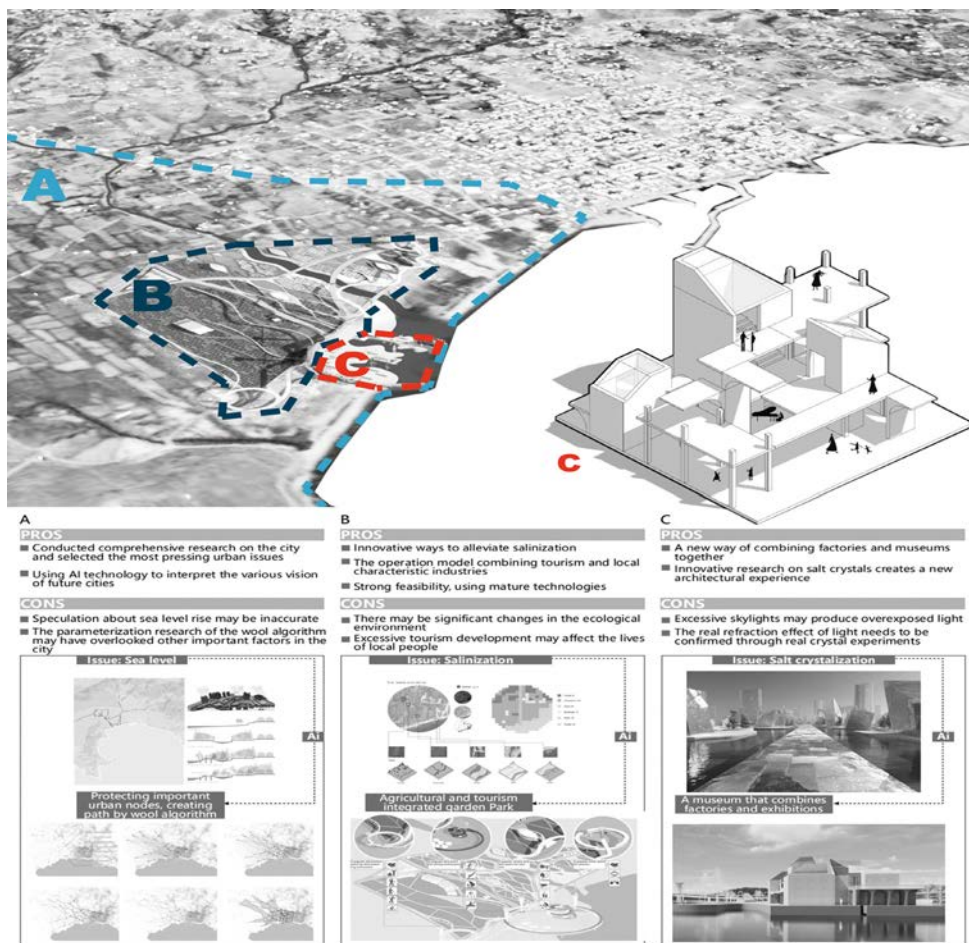
An earth-sheltered form with walkable green roof ramps integrates into the coastal landscape. The program includes therapy, meditation, dining, cultural and social spaces, residential suites, and courtyards.

Inspired by the Dragon House, the design combines courtyards, inhabitable roofs, organic forms, and sustainable materials, creating a healing landmark that connects nature, culture, and community.



**Guoji Li**





# Karystos Utopia

## Work with it, not against it

In this project, three approaches form a complementary relationship: A employs AI to analyze sea-level rise and propose path protection strategies; B builds upon his foundation to mitigate salinization through the integration of agriculture and tourism; C transforms salt crystals into architectural language, merging factory and exhibition spaces.

Together, these three approaches—spanning urban planning, ecology, and building materials—demonstrate a multi-layered strategy for addressing environmental challenges.



Fei Pan





# Co—NEST

## A home shared by people and birds

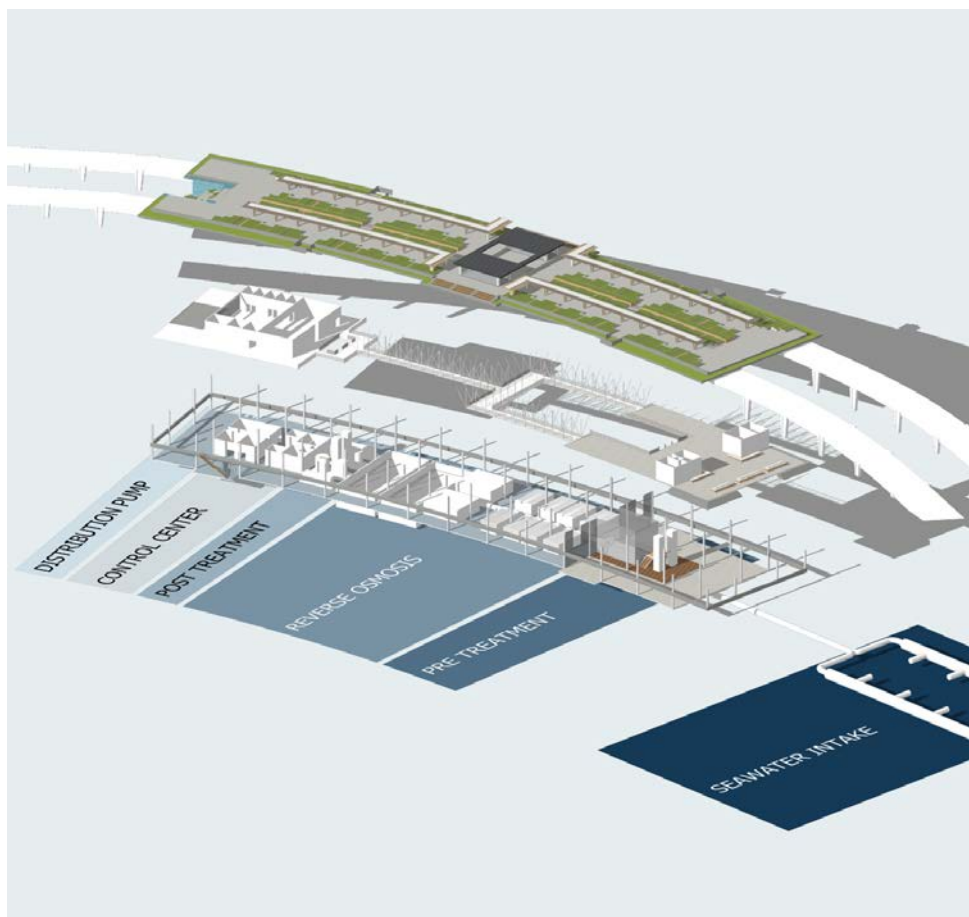
Habitation is no longer an island of individuals, but a network of nests built together; Architecture is not only a container, but also a bridge connecting people, nature and emotions.

Based on the geographical location of Karystos and existing issues, improve infrastructure and the development of tourism, develop distinctive culture to attract visitors, protect migratory routes of birds, and provide them with enough habitats and food. People build nests for the birds, and these nests together form a shelter for people to rest.



Jiaqian Fan





# FLOWING FUTURES:

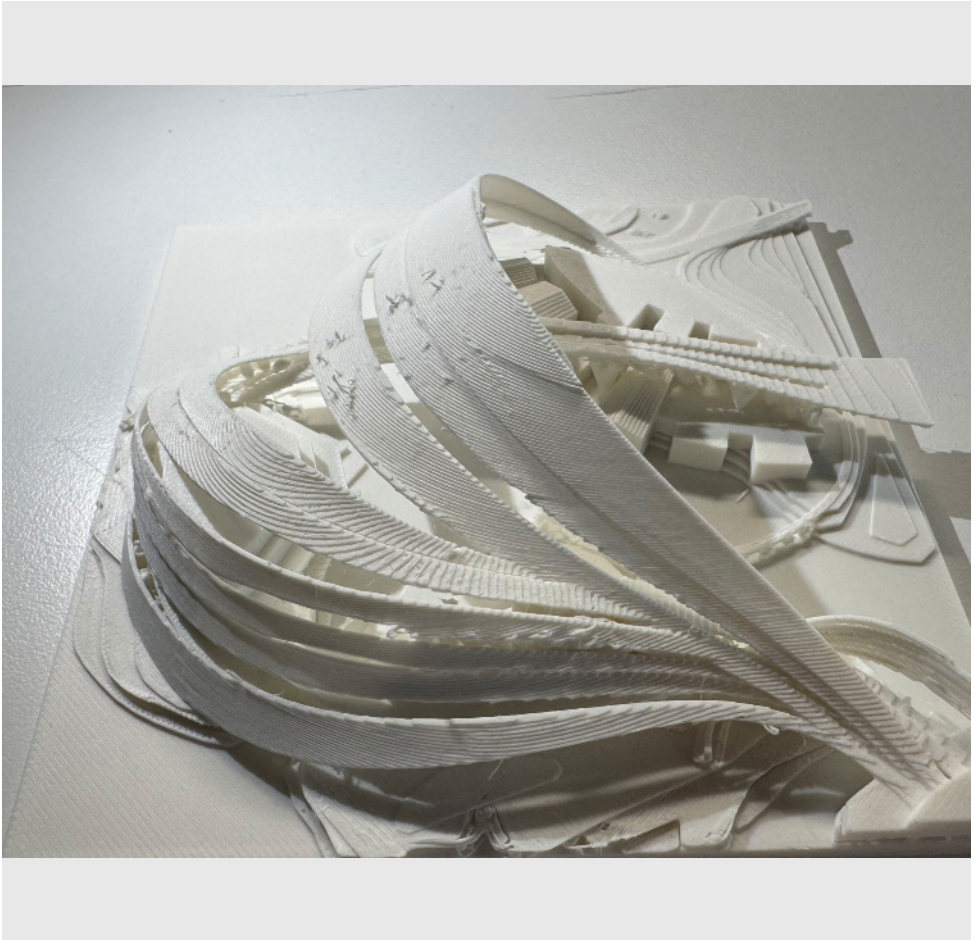
## A Water-Resilient Future for Karystos

Karystos faces rising sea levels and freshwater scarcity, threatening its people and agriculture. Flowing Futures turns seawater into sweet water through a desalination plant integrated into a larger masterplan of promenade, greenbelts, markets, and public spaces. The building is conceived like an aqueduct which is a long, linear sequence where each stage of desalination is revealed through its façade. Above, a green roof hosts farming, amphitheaters, and gardens, making infrastructure a civic space. By linking water, agriculture, economy, and community, the project offers resilience and a new shared identity for Karystos' future.



Felicia Ericca





# Resilient Ark: Karystos

## Resilient Architecture and Urban Design for Rising Sea Levels

The “Resilient Ark” reimagines Karystos’ coastal fabric through three dimensions of resilience: economic (revitalizing industry), cultural (preserving maritime heritage), and physical (adapting to sea-level rise). At its core, a Marine Cultural Center merges shipyard and museum, combining exhibition, education, production, and leisure. Inspired by the Kármán vortex street, the design translates fluid dynamics into adaptive spatial strategies informed by sand and water-flow models. Multi-layered ramps guide movement like vortex flows, linking plazas, exhibition halls, shipyard ruins, and viewing decks. These ramps serve as resilient infrastructure—functioning as embankments during flooding and promenades in normal conditions. Ultimately, the project proposes an experimental urban model, mapping the interplay of vortex, terrain, and human flow to envision a dynamic dialogue between city, culture, and nature.



Haonan Yu





# The Grid Unwritten

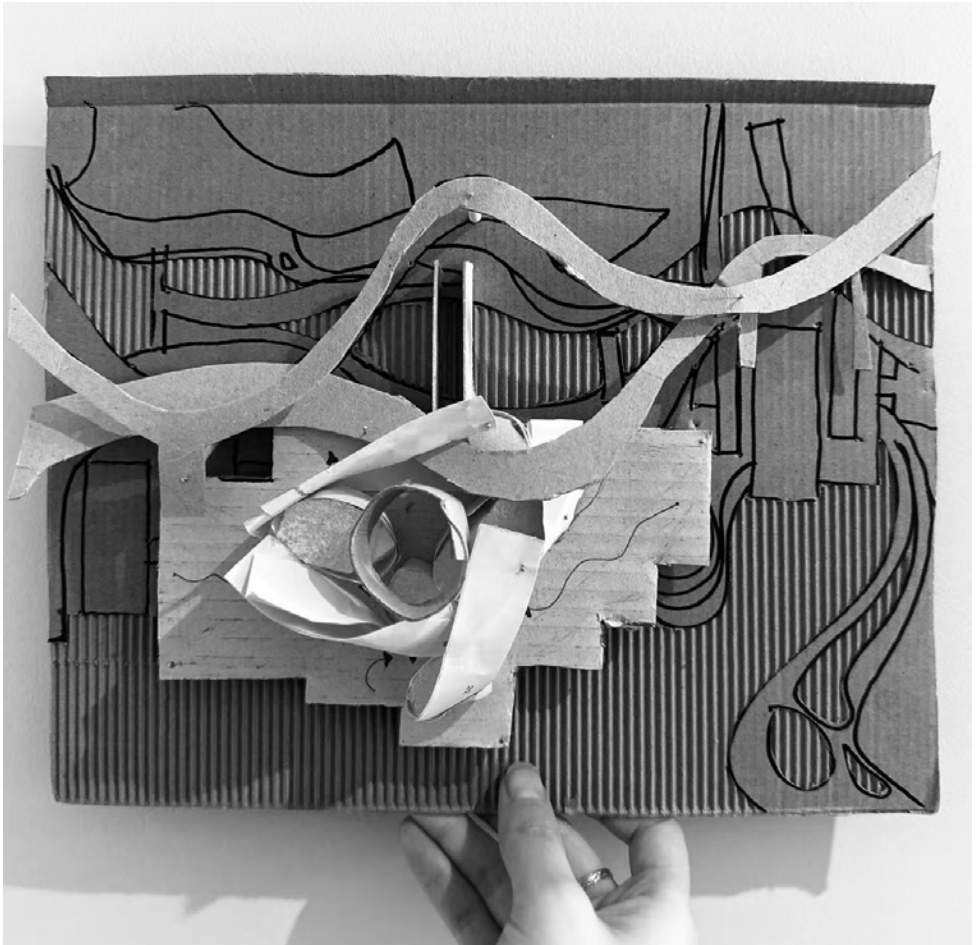
## Think of the city as a grid

Breaking free from the rigid control logic of traditional grid systems, architecture is no longer a fixed functional container. Instead, it becomes an open framework composed of "fissures," "displacements," and "interweaving," stimulating interactions between people and between people and the city. Through non-orthogonal volumes, spatial gaps, and blurred boundaries, it constructs event spaces shared by residents and visitors alike.



Jiaqi Zhang





# Floating fence : Adaptive connection

## Create a linkage for Karystos

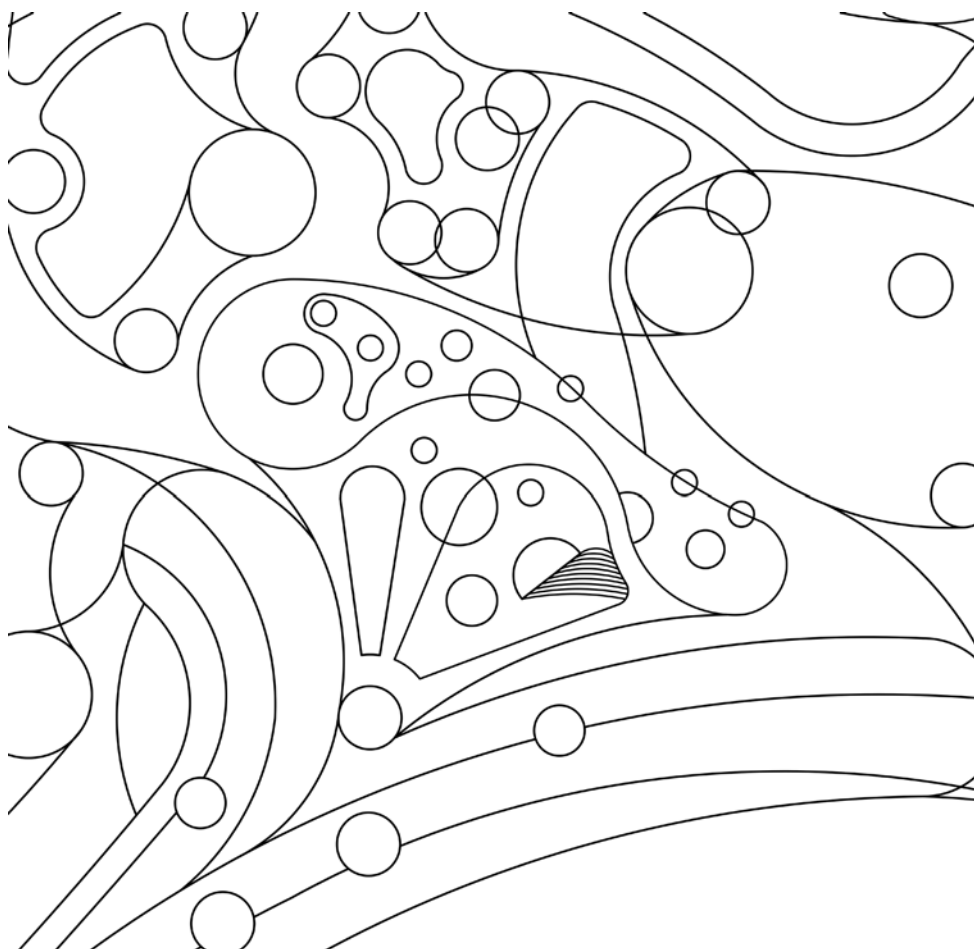
The Floating Fence is a symbolic and functional structure that emphasizes the ambiguity and fluidity of boundaries rather than isolation. It is not only an enclosure device, but also a connection mechanism. Its design logic can be summarized into three layers:

1. Floating: In response to sea level changes, emphasizing the state of "floating" and "uncertain", forming a dynamic space.
2. Fence: A non-rigid boundary that forms a continuous but permeable interface.
3. Linkage: Connect the three parts of the Masterplan (such as the city, the waterfront, and the ecoregion) to become a transition medium.



Xinyuan Xu (Irene)

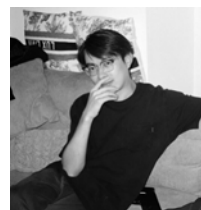




# Stitching the Urban Web

## Link & Transition in Karystos

We envision a connected Karystos where link and transition become the everyday spatial narrative: a car-light, walkable network that stitches the geometric town to the organic countryside through productive vineyards, coastal promenades and civic terraces. Thresholds are transformed into shared public "rooms", local wine culture and circular economies are strengthened, mountain-to-sea ecological corridors are restored, and a resilient framework grows through small, testable prototypes that aggregate into a sustainable urban-rural commons.



Yangyang He





# Agro-Urban Surface Hub

## The Building as a Surface

Under the concept of 'the city as a surface,' architecture is viewed as the folds and extensions of the landscape, rather than isolated volumes. The Surface Agriculture Hub integrates agriculture, ecology, and urban life through green roofs, urban agriculture, and wetland restoration around the site. It serves as both a platform for public education and exchange, and an interface for biodiversity. The building materials are sourced from local stone and wood in Karystos, making it a truly environmentally friendly node rooted in its surroundings, creating a new shared surface at the boundary between agriculture and the city.



Yanbin Chen





# Geopsychology of Karystos

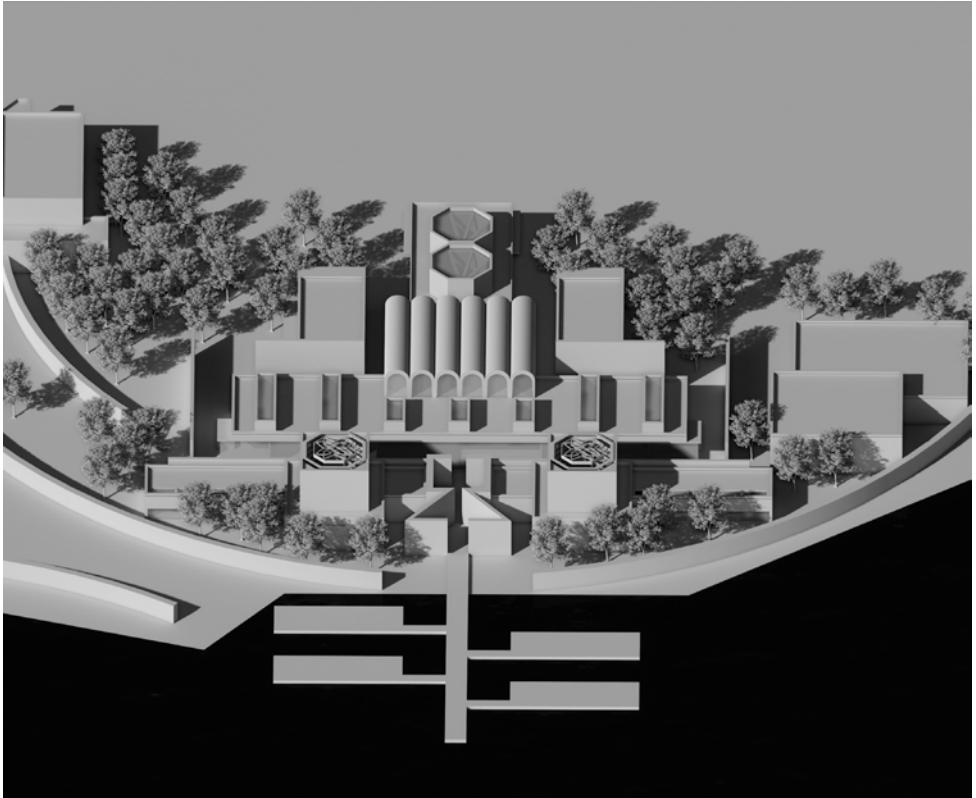
## Emotion-Driven Urban Mapping

Through the lens of psychogeography, the urban planning of Karystos can be optimised to enhance the psychological experience and emotional engagement of its inhabitants. By designing diverse exploratory paths and sensory markers—such as meandering paths and herb gardens—the urban design encourages residents to “drift” in time and space, to rediscover the uniqueness and layered history of the city. This design not only beautifies the urban environment, but also strengthens the relationship between people and place through embodied memory and multisensory experience. The open and multifunctional spaces support everyday activities and spontaneous social interactions, stimulating informal participation and emotional bonding. Such planning ultimately aims to create a city that breathes with seasonal rhythm and cultural memory—a place that is both emotionally rich and socially inclusive.



Yitian Li





# METABOLIC CENTER

## Re-definition of The Future Public Spaces in Karystos

Food (the most important social resource under the food crisis) has impacted the social structure and political structure. With the food industry's self-production, selfmanagement and average redistribution of food, the state's political power has been weakened. The residents of the food community have mastered the core social resource of food (the carrier of power), and with the average redistribution, the concept of the republican city was born. This change may be caused by a global problem, which I think is global climate change.



Yue Sun





# ThalassoNest--

## Dynamic symbiosis

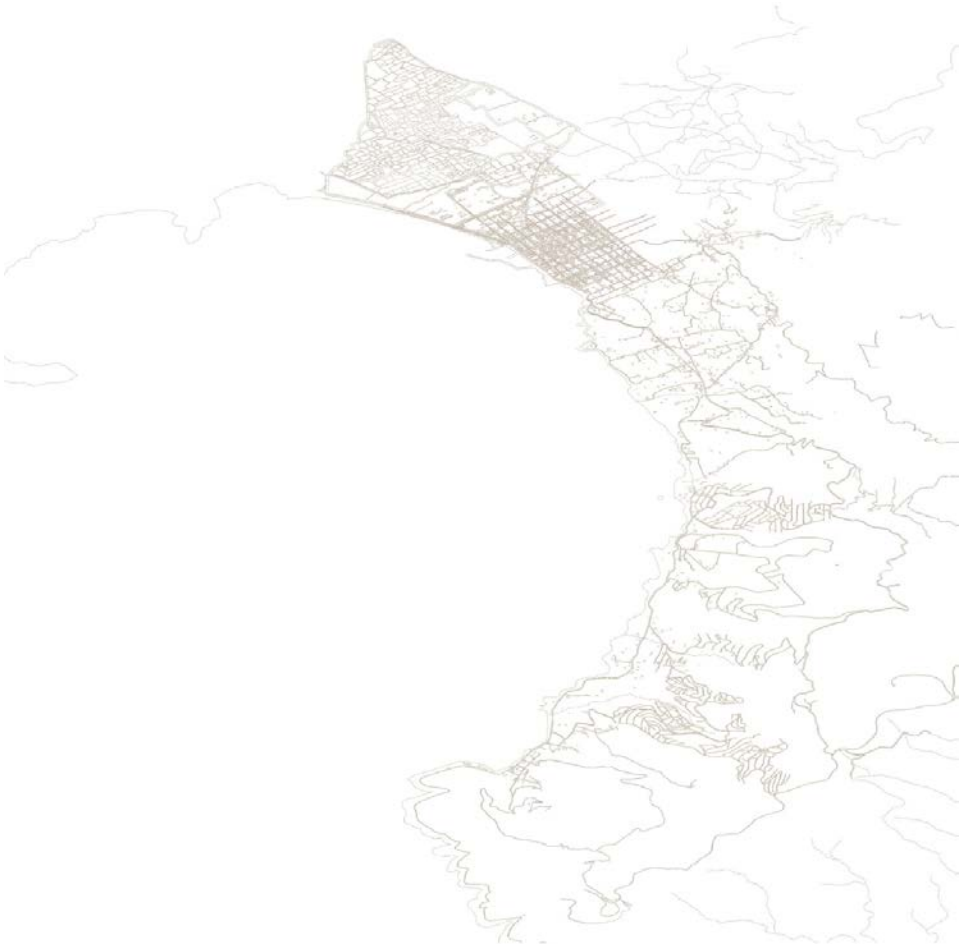
ThalassoNest is envisioned as a responsive, tidal-integrated urban habitat along the Aegean coastline of Karystos, Greece—a site shaped by mountain-sea adjacency, migratory bird routes, and deep marine-cultural memory. Rooted in the coastal morphology of Karystos, the design embraces natural elevation, sea wind, and tidal movement to create a built environment that breathes with the landscape.

Architectural modules unfold in curved terraces, tidal pools, floating gardens, and panoramic platforms, forming a settlement that interacts rhythmically with the sea. This is not simply a place to live by the water, but to live with the water—embracing it as energy, atmosphere, and ecological infrastructure.



Zhongwei Hou





# “∞” Sitopia

## “sitos food” + utopia.

“sitopia” is a word I coined from the Greek “sitos food” + utopia. So it means “food utopia” so our values start using food to shape the world more actively.

In parallel, a new wastewater treatment plant is proposed on the western edge of the site, linked with the existing plant to form a resilient water management system. Designed to reconcile the tension between dry-season water scarcity and peak summer tourism demand, the facility is structured into four main components: an exhibition gallery, a research and development centre, office spaces, and the treatment zone.



Churong Yu





# From “Lively” to “Livability”

## Urban-Spiritual Reinterpretation through Orthodox Rituals

This project examines the influence of Orthodox Christianity on local communities in the Evia Peninsula, Greece, through three stages—research, urban design, and architecture. It explores how abstract religious concepts and the lively lifestyle they inspire can be translated into urban livability, forming an experimental design approach.

The Seven Sacraments are reinterpreted as urban functions, with nodes and connecting paths generating a new development model rooted in local culture and natural elements to envision a sustainable city. At the architectural scale, small sacred spaces extend urban logic in reverse, showing how pilgrimage becomes an architectural procession that links individual experience with collective identity. From city to building scale, the project transforms liveliness into livability, creating a new urban-spiritual environment.



Yanxi Yang





# The ANCHOR-

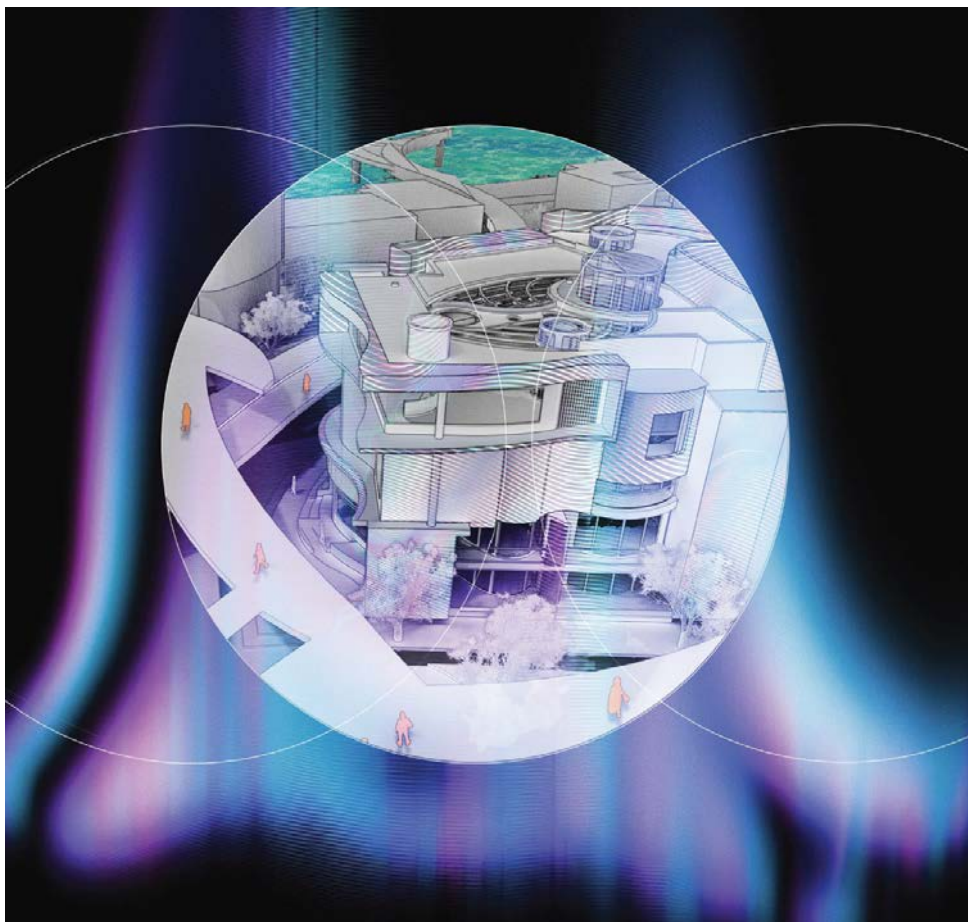
## The heart of Agri-tourism urbanism

The utopian urbanistic concept of an “agri-tourism urbanism” envisions an ideal city that connects the daily life and culture of Karystos with tourists, ensuring that local development is no longer solely tourism-focused. Instead, it links urban development with the local urban image. The Anchor inspired by local olive trees and traditional courtyards, the design features a tree-like pavilion roof, which is a modular system capable of adapting to a variety of functions. The building is a lightweight timber structure, complemented by locally sourced marble. It blurs the boundary between interior and exterior, breaking away from the “box-like” form of conventional architecture. Metal joints are used for curvature adjustment, allowing the building to manifest as a physical anchor for the genius loci of Karystos. It is a “Third Place” that can stimulate community interaction and local vitality, enabling local culture to be seen and experienced.



YI-LUN, CHUNG





# The Sound Tower

## Reimagining Karystos through sound, space, and urban harmony

The Sound Tower is conceived as a civic landmark that translates Karystos's cultural and natural soundscapes into immersive spatial experiences. The project integrates existing cultural sounds such as church bells, chants, and local music with natural phenomena like wind, rain, and filtered light. Through features such as the whisper galleries, rain tubes, and wind tunnels, sound becomes both a medium of expression and a tool for spatial design. Immersive spaces encourage residents and visitors to actively engage with their surroundings, transforming passive listening into collective cultural experience. By amplifying seasonal rhythms and weaving them into architectural form, the project envisions a path to urban harmony where nature, culture, and architecture resonate together.



**Pisitpong Tuntimas**



# Landscape Lab.

This Urban Lab explores the relationship of the city to the culturally constructed ideas of nature, landscape and ecology. In contrast to the conventional view of landscape as the 'space left over between buildings', we explore the idea of the city itself as landscape and ecosystem. We deconstruct the traditional dichotomy between the urban and the natural, to explore the interesting and complex ways in which this relationship is manifested in different hybridised forms. A healthy ecosystem is both diverse and dynamic, reacting and adapting to external forces in ways which suggest a form of collective intelligence.

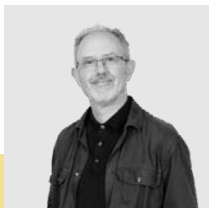
If urban utopias must respond above all to the existential challenge of climate change, can these be built on simulacra of natural processes or ecosystems?

We explore these ideas through a comparative study of two 'Satellite Cities', Rochdale in Greater Manchester and Sabadell in the Barcelona Metropolitan Area.

Project site: Sabadell, Spain, and Rochdale, UK



## Teaching Team



**Eddy Fox**  
Lab Lead



**David Johnson**



**Dr Joanne Hudson**



**Joren Heise**

## Contributors

**Danny Crump**  
(Director of Urbanism, Layer Studio)

**Levi Rickell**  
(Rochdale Development Agency)

**Gary Davies**  
(Rochdale Development Agency)

**Lucy Sexton**  
(Rochdale Development Agency)

**Antoni Serra**  
(Head of Urban Planning, Sabadell City Council)

**Maite Morao**  
(Sabadell City Council)

**Tomas de Castro**  
(Sabadell City Council)

**Alvaro Clua**  
(ETSAB, University of Barcelona)

**Vicenç Casals**  
(Retired Professor of Urban Geography,  
University of Barcelona)

**Núria Carcolé and colleagues**  
(Habitat3, Barcelona)





# URBAN REWILDING

## Forest Invasion Plan

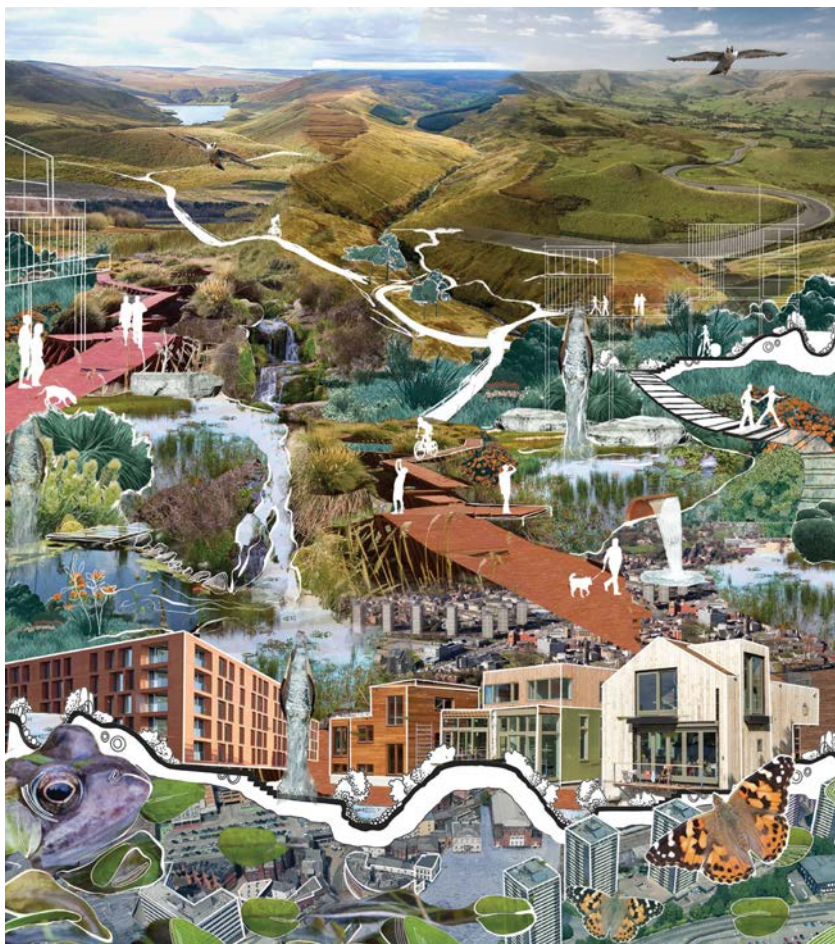
As urbanization expands, natural ecosystems are pushed to the edges of cities, leading to biodiversity loss and environmental damage. The Forest Invasion Plan aims to bring nature back into urban areas, turning cities like Sabadell into greener and more sustainable spaces. This plan promotes urban rewilding by introducing forests, native plants, and wildlife corridors into abandoned industrial areas and unused spaces.

The plan focuses on creating green corridors to connect cities with nearby natural areas, restoring natural environments, and increasing biodiversity. It provides cleaner air, shade, and recreation spaces for residents. By combining urban life with nature, this plan transforms cities into vibrant ecosystems where humans and nature live in harmony.



Qianyi Wu





# The EcoLink Project

## resilient futures for people and place

The utopian vision of 'The EcoLink Project' imagines an ideal city that thrives in its symbiosis with its natural topography and landscape, an urban environment shaped by the principles of ecological urbanism and driven by nature-based solutions. This harmonious integration fosters rich biodiversity and water resilience, transforming the city into a living, breathing ecosystem. Water is seen not as a threat but as a source of inspiration and opportunity. Urban resilience is not only ecological, but also deeply social; communities are designed to be inclusive, connected and adaptive, cultivating a sense of shared purpose and belonging. In this vision, cities do not dominate the landscape, they reflect it. Each becomes a unique expression of its environment, fostering healthier living and respect for the natural world.



**Megan McGuinness**





# Stitching SABurbia

## Connecting communities with voids

The design focuses on using voids in a rigid block neighbourhood to bring together a community. With the rising population of Sabadell, the design explores building in the context of irregular low-rise residences to accommodate 150% of the current built-up area.

A hierarchy of open spaces is activated to ensure quality of life for residents within and around the building.



Aniruth Triambak





# Return the UTOPIA

## Gender Inclusive Design

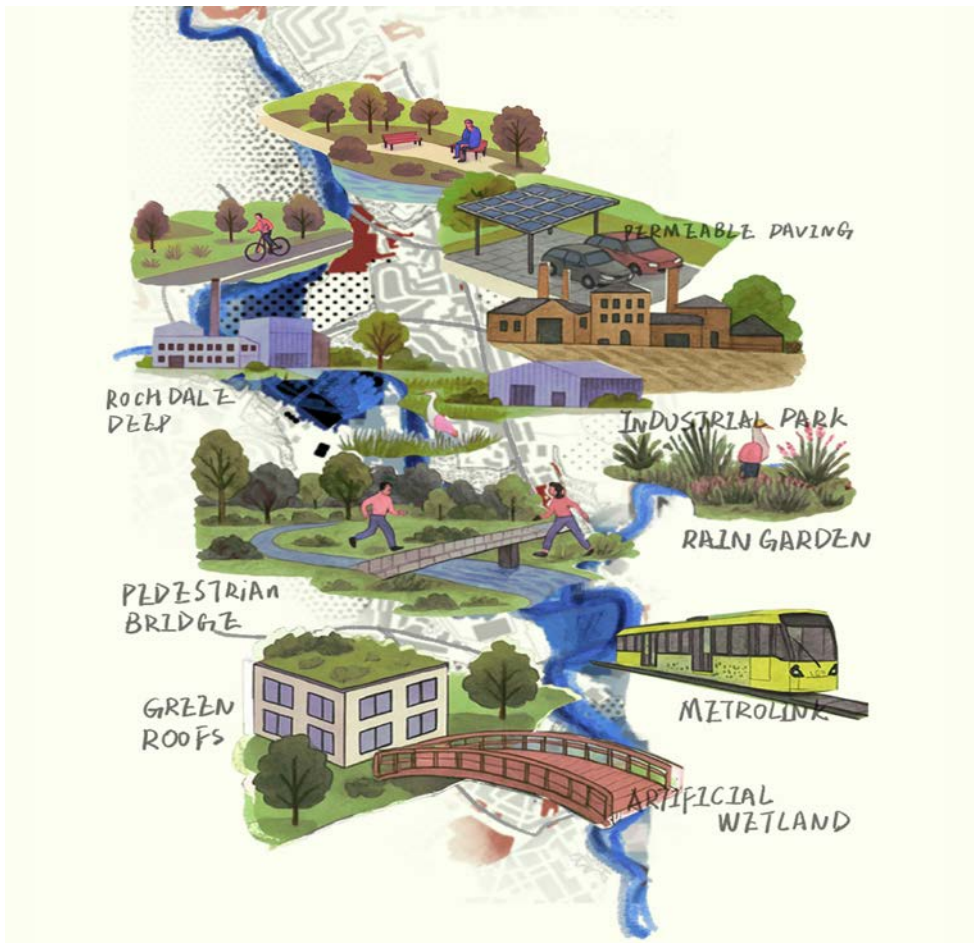
With gender orientation as the core, the design is committed to creating a safe and fair public space for different genders and groups of people, and shaping a true utopia.

The site is located near the city centre of Rochdale, Greater Manchester. The site is close to the riverbank, including residential areas, river channels and large areas of woodland covered with vegetation. In the process of offline research, the author found that the site scenery is very good, and there are many residents in the site to carry out a variety of activities, but the activity group is almost no women. Therefore, considering the safety of women in public activity Spaces around the world, it was decided to plan a space suitable for the fair use of all genders with women's safety and gender orientation as the core.



Peiyi He





# Stitching the City: Blue-Green Framework for Rochdale

In response to climate change and urbanization, my vision for Rochdale is to create a lue-Green City where water and nature are seamlessly integrated into urban life. By combining blue and green infrastructure, I aim to address environmental challenges like flooding and heat islands, while enhancing biodiversity and air quality. This approach also fosters stronger communities by designing interconnected parks, green corridors, and public spaces that encourage social interaction and inclusivity. Rochdale's unique landscape provides the perfect opportunity to pioneer this model, blending sustainability with community well-being. Through this project, I hope to build a city that is resilient, vibrant, and deeply connected—a place where people and nature thrive side by side.



Chenxin Wang





# Urban regeneration

## The future of Rochdale

I have been Rochdale for many times, not so much to investigate and study, but to feel the heartbeat of the city and breathe with the city. I felt its loneliness. It was like a frustrated scholar, full of potential but no one cared about it. Maybe we can do something.

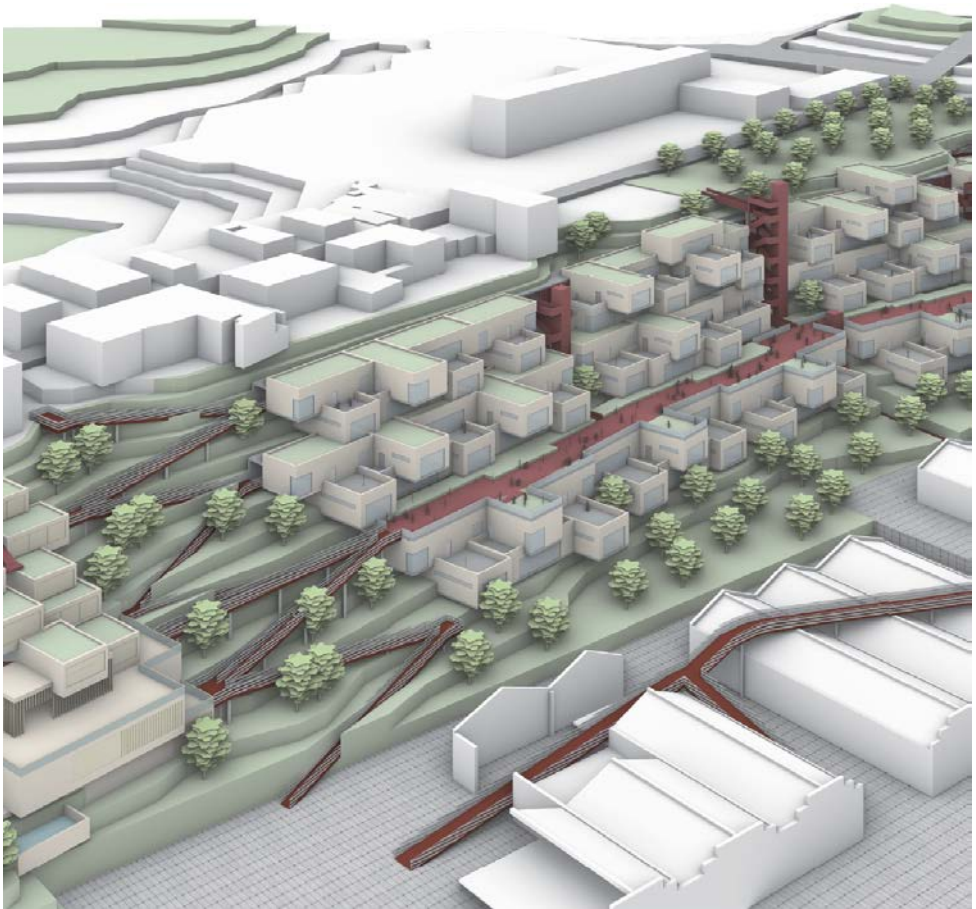
The design is for a future integrated development that includes a hotel, office shopping mall, supermarket, library, gym, and multi-functional rooftop entertainment functions.

Young people can escape from the hustle and bustle, return to simplicity, and move towards a better future with the help of architecture and technology.



Jiaze Song





# Living With The Slope

## Between Slope and City:

This project reimagines Sabadell's steep industrial hillside as a connected and sustainable living environment. By integrating multi-level circulation cores, modular prefabricated housing, and green-blue infrastructure, the design transforms topographic challenges into opportunities for community life. Residual industrial land is adapted into cultural and ecological spaces, while terraced green roofs, sky galleries, and public pathways establish new urban continuity. The outcome envisions a walkable hillside city where ecological resilience, architectural adaptability, and social inclusivity converge.



Chenyoun Wan





# Self-sufficient greenhouse house

## This is a circular building

The proposed design introduces a prototype of a self-sufficient greenhouse dwelling, structured around three main components: the residential area, the cultivation area, and the social area.

Drawing upon the river that runs through the site, the project establishes four closed loops—water, energy, food, and waste—ensuring continuous self-sufficiency. Beyond material provision, the design emphasizes human interaction with both nature and community, offering residents a sustainable lifestyle that enhances well-being and fosters a strong sense of belonging.



**Yuxuan Lu (Laure)**





# Ripoll River Living Lab

## Ecological Wetlands and Community Resilience

The site lies along the Ripoll River valley in Sabadell, framed by cliffs and surrounded by farmland, industrial remnants, and historic landmarks. Despite its ecological value, the area faces water pollution, flooding, and fragmented land use that weaken community ties.

The project responds with a multi-layered wetland system to restore resilience and manage water, while forming an agricultural co-housing community at the centre. Four public buildings and shared landscapes create social anchors, linking heritage and ecology into a coherent vision of resilient living.



Yufei Tang





# Rochdale Gateway

## Linking Transit, Heritage, and People

Rochdale Connect envisions a seamless link between the railway station and the town centre, transforming the gateway into a place for movement, culture, and community.

By framing heritage, enhancing pedestrian flows, and creating civic spaces, it aspires to make Rochdale more connected, vibrant, and future-facing. collaboration, and creativity. Rooted in Rochdale's identity while responding to contemporary needs, Rochdale Connect demonstrates how urban design and architecture can work in tandem to bridge transport, community, and place.



**Bhavadharany Sivaji**





# LIVING IN THE FOREST

## Sustainable City Interwoven with Nature

Bringing nature into the city. In the future, urban boundaries will gradually blur, and cities will blend into nature, realizing the beautiful vision of a "forest city." By integrating green housing with the landscape, buildings are no longer cold, impersonal structures, but rather habitats gently enveloped by greenery. Terraces become sky gardens, and streets and rooftops intertwine to create a vibrant and vibrant living environment. This is a utopia shared by people, nature, and the city—a true "forest city."



Haowen Zhou





# Resilient Site Regeneration for Flood Adaptation

This project transforms a flood-prone riverside site in Littleborough into a resilient public landscape. By reshaping the terrain into gentle, floodabsorbing slopes and layering walkways with public platforms, the design integrates water management with everyday community use.

A central hub combines market, play, and event spaces, enhancing accessibility and creating a social core that connects surrounding neighbourhoods.



Yefan Zhang

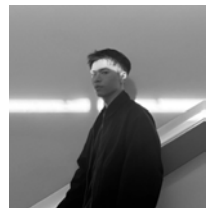




# [ RE ] NATURE

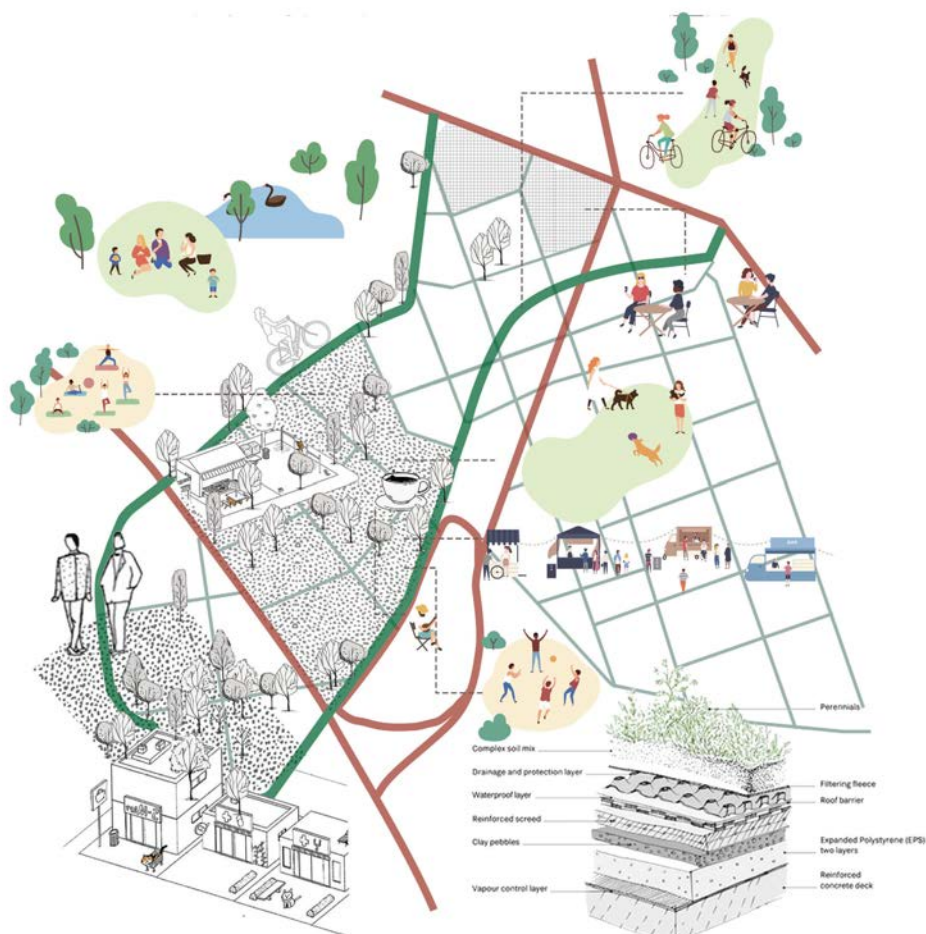
**A Centre for Sensory Encounters Between Humans, Plants, and Wetlands.**

This project proposes a Coexistence Learning Centre that blurs boundaries between urban daily life and ecological systems through sensory experience. Rather than separation, I promote coexistence — between humans and plants, urbanity and wetlands, daily life and speculative futures. Through sequencing, interaction, and empathy, I hope this space invites visitors to rethink our shared environment in the Anthropocene. accuracy and personal expression.



**Jun-Wei Du (Louie)**





# From Ruins to Roots: A Living Community

Within the context of utopia, desolation is not decay but fertile ground for new life. This project takes disused industrial land as its starting point, revitalising the site through road network restructuring and functional architecture to establish it as the foundation for community renewal.

The design emphasises the symbiosis of history and future: restoring relics and green spaces preserves memory, while integrating community functions and spatial organisation stimulates interaction. Buildings engage with the weighty "castle-like" environment through simple, transparent contemporary spaces, employing an "open-closed-open" rhythm to create tension and layers, shaping a rich public life.



Lijun Hou





## Bridging Flood, Drought and Memory: A Resilient Urban Waterscape

Due to its industrial past, the site suffers from river pollution and occasional soil contamination. It also faces dual water risks—drought and flooding—while remaining ecologically degraded and poorly connected. This project aims to restore the site's vitality through ecological repair, water management, improved accessibility, and multifunctional public use.

This project addresses the site's industrially-induced ecological and hydrological issues while enhancing its public function and environmental resilience.



Moxuan Li





# Aging-Friendly Oasis

## A vibrant lifelong growth community

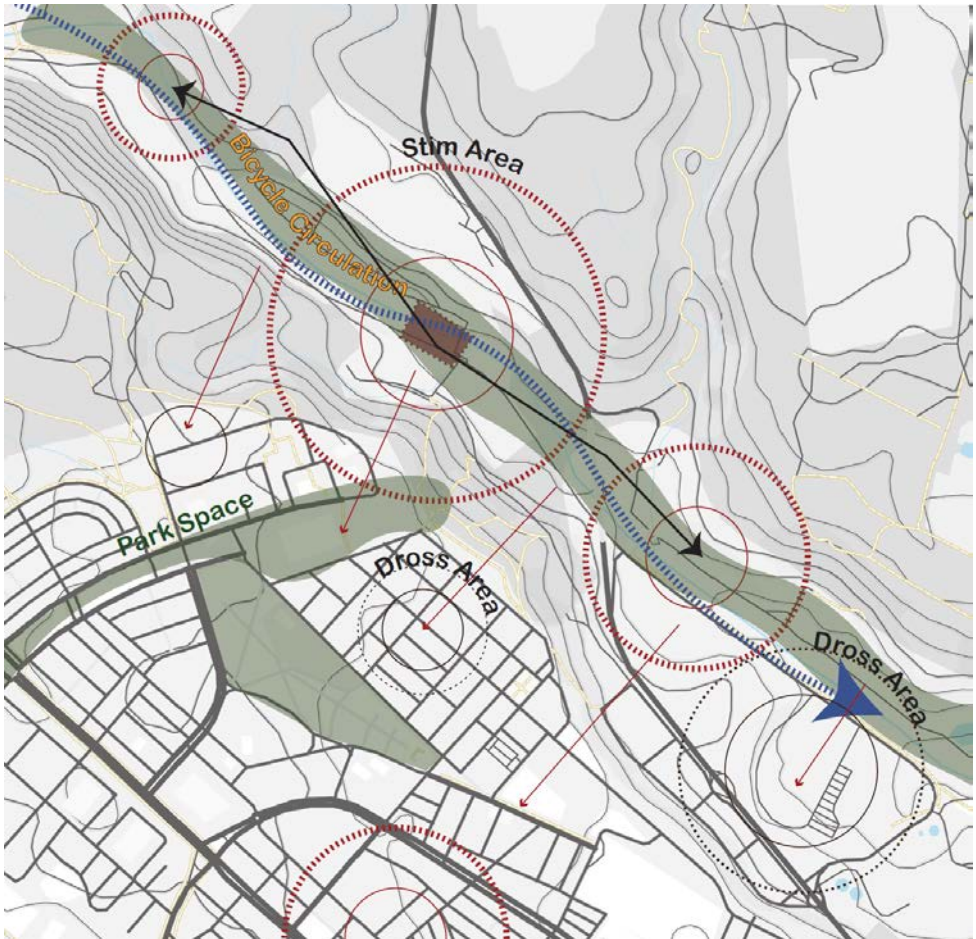
The "Aging-Friendly Oasis" envisions a harmonious blend of urban design theory and practical implementation to create a thriving, inclusive community for the elderly. Located in a picturesque river valley, this community leverages its natural surroundings to foster physical and mental well-being.

This project challenges the traditional concept of aging communities as isolated enclaves, instead presenting a vision of vibrant, intergenerational living spaces that celebrate nature, sustainability, and urban integration.



Tianruo Wu





## Reviving the Edge: Cycling Infrastructure along Ripoll

This project proposes a Cycling Hub along the Ripoll River in Sabadell. The building combines bicycle-related services—such as rental, repair, storage, and a café—with spaces for community gathering, exhibitions, and environmental education. It is conceived as both an infrastructural node and a cultural platform: reconnecting the city with the river through sustainable design (CLT timber structure, permeable surfaces, and ecological restoration). By integrating cycling routes with green public space, the project aims to promote low-carbon mobility, restore the river's ecology, and create a new urban landmark for regional cycling enthusiasts as well as the local community.



Xihe Feng





# Re-Cultivating Memory

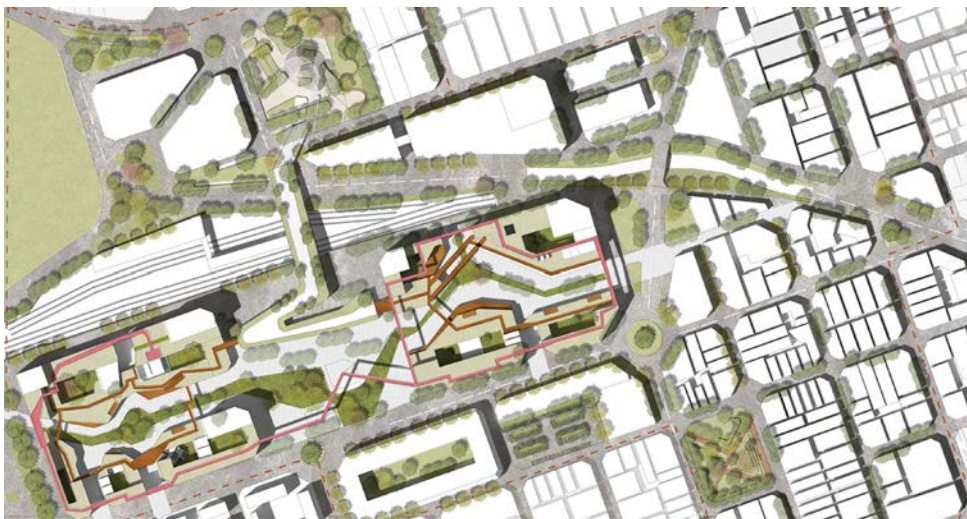
## Planting memory, shaping community

The vision of Re-Cultivating Memory reimagines Sabadell's abandoned textile factory as a community hub where ecology and culture grow together. By preserving steel frames and chimneys, the design transforms industrial relics into anchors of collective memory. Planting halls, greenhouse labs, weave a productive ecological cycle into the city, while courtyards and shared spaces nurture everyday interaction. In this Neo-Utopian scenario, nature is no longer background decoration but a protagonist of urban life—absorbing floods, producing food, and offering communal rituals. It demonstrates how landscapes can regenerate as inclusive ecologies, addressing weak green infrastructure and limited public engagement, and inspiring a future where memory and ecology are co-produced as a new urban utopia.



Zhiyu Zhang





## Super block environment design around the station

The project is located at the junction of the industrial area and the residential area of Sabadell. The area is divided into two parts by the railway station. The lack of infrastructure and vegetation in this area has brought great inconvenience to the workers and residents here. The project plans to comprehensively upgrade this area and optimize the overall environment, including accessibility, greening rate, sustainability, noise level, infrastructure and other aspects.



Zikang Zhang





# Living Close, Living Green

## An Ecological Co-living Neighborhood

This project is located in Rochdale, UK. After two rounds of reducing the site scope, it has been replanned in conjunction with river ecology, public green spaces, and residential areas, providing a venue for people of different ethnicities that fosters a sense of social belonging and ample cultural exchange, as well as offering a variety of activities.



Yuehan Zhang





# Riverscape Commons

## Re-imagining Littleborough's Landscape

The main aim of the project is connection; linking people, places, and histories across a landscape shaped by both nature and industry. It sits at the meeting point of ecological restoration, infrastructural division, and industrial heritage, where the wetland corridor converges with the railway line and the historic canal edge.

Here, the design moves beyond the function of commerce, evolving into a shared setting for memory, exchange, and renewal. By transforming the Littleborough canal-side into an active civic landscape, the proposal invites people to cross physical and social boundaries, fostering connection between communities, histories, and the surrounding environment.



Tamanna Vakil







